



East Gwillimbury

2023

COMMUNITY PROFILE



V 1.0

November 2023

© 2023 Town of East Gwillimbury

Information in this document is subject to change without notice. Although all data is believed to be the most accurate and up-to-date, the reader is advised to verify all data before making any decisions based upon the information contained in this document.

For further information, please contact:

Brennan Kenny

Manager of Economic Development

Town of East Gwillimbury

19000 Leslie Street, Sharon, Ontario L0G 1V0

P: 905.478.4283 Ext. 3862

bkenney@eastgwillimbury.ca

Table of Contents

Data Sources	1
1. Introduction	2
1.1. Location	3
1.2. Climate	4
2. Demographics	6
2.1. Population Size and Growth	6
2.2. Age Profile	7
2.3. Language Characteristics	9
2.4. Mobility Characteristics	10
2.5. Level of Education	12
2.6. Major Fields of Study	13
2.7. Income	15
3. Labour Force	19
3.1. Key Indicators	19
3.2. Labour Force by Occupation	20
3.3. Labour Force by Industry	22
3.4. General Wages by Occupation	25
3.5. Labour Force Commute	28
4. Transportation and Shipping	30
4.1. Highways	30
4.2. Rail and Bus Services	33
4.3. Airports	35
4.4. Ports	36
5. Taxes and Utilities	37
5.1. Local Property Tax Rates	37
5.2. Federal and Provincial Income Tax Rates	39
5.3. Water and Waste Management	42
5.4. Electricity and Natural Gas	43

5.5.	Community Infrastructure	44
6.	Building and Development-Related Fees	45
6.1.	Development Related Fees	45
7.	Business Support Programs and Services	46
7.1.	National and Provincial Support	46
7.2.	Local/Regional Support	47
7.3.	Education, Employment and Training	48
8.	Quality of Life	49
8.1.	Housing Characteristics	49
8.2.	Health, Social and Community Services	50
8.3.	Education	52
8.4.	Recreation and Tourism	54
8.5.	Events	57
8.6.	Local Media	58
8.7.	Local Institutions	59
	Appendix A – Provincial and Federal Incentives	60

List of Tables and Figures

Table 1: East Gwillimbury Average Temperature (°C), 1981-2010	4
Table 2: Population Change, 2011 to 2051	6
Table 3: Age Distribution, 2023	8
Table 4: Language Characteristics, 2023	9
Table 5: East Gwillimbury Mobility Rates, 2023	10
Table 6: Major Fields of Study, East Gwillimbury, 2023	14
Table 7: Total Individual Income Levels, 2022	15
Table 8: Household Income Levels, 2022	16
Table 9: Labour Force Characteristics, 2023	19
Table 10: Labour Force by Occupation, 2023	21
Table 11: Labour Force by Industry, 2023	23
Table 12: General Wages (Toronto Region, Ontario) by Occupation	25
Table 13: Largest Private Sector Employers	27
Table 14: Where the East Gwillimbury Resident Labour Force Works, 2021	28
Table 15: Place of Residence for Persons Working in East Gwillimbury, 2021	29
Table 16: Traffic Counts for Key Roadways	30
Table 17: Distance to Urban Centres	31
Table 18: Distance to Major US Border Crossings	32
Table 19: Regional Airports	35
Table 20: Regional Ports	36
Table 21: Local Property Tax Rates, Effective 2023	37
Table 22: Combined Corporate Taxes – General Corporation (2022/2023)	39
Table 23: Corporate Taxes – Canadian Controlled (2022/2023)	39
Table 24: Personal Income Tax, 2022-2023	40
Table 25: Sales Tax	41
Table 26: Waste Management Depots Accessible to East Gwillimbury Residents	42
Table 27: Communications Services	44
Table 28: National and Provincial Support Organizations	46

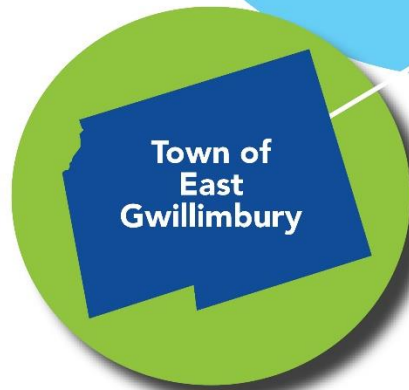
Table 29: Local/Regional Support Organizations	47
Table 30: Post-Secondary Institutions Near to East Gwillimbury	48
Table 31: Dwelling Characteristics, 2023	49
Table 32: Regional Emergency, Health and Protection Services	51
Table 33: East Gwillimbury Schools	52
Table 34: Recreation Facilities	55
Table 35: Annual Events	57
Table 36: Newspapers	58
Table 37: Financial Institutions in East Gwillimbury	59
Table 38: Real Estate Offices	59
Table 39: Capital Funding	60
Table 40: Commercialization Funding	61
Table 41: EDO-Community Infrastructure	62
Table 42: Clean-Tech, Energy and Environment	63
Table 43: Creative Industries	64
Table 44: Exports	66
Table 45: Human Resources and Training	67
Table 46: Innovation	69
Figure 1: East Gwillimbury Location Map	3
Figure 2: East Gwillimbury Average Precipitation, 1981-2010	5
Figure 3: Age Distribution Chart, 2023	7
Figure 4: Educational Attainment for Age Group 25-64, 2023	12
Figure 5: Major Fields of Study of Residents Ages 15 and Older, 2023	13
Figure 6: Household Income Levels, 2022	18
Figure 7: Labour Force by Occupation, 2023	20
Figure 8: Labour Force by Industry, 2023	22

A Snapshot of East Gwillimbury

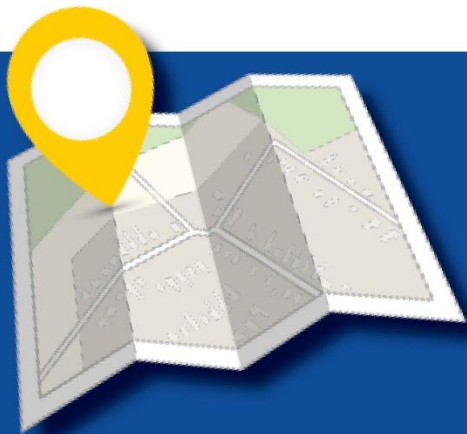


The Town of East Gwillimbury offers easy access to Toronto and the surrounding area, while remaining rural in nature and offering a standard of living that is second to none. The Town is growing rapidly, providing incredible new opportunities to residents and businesses in the area. While currently home to just over 30,000 residents, it is projected to be approaching 90,000 residents by 2051.

East Gwillimbury is home to approximately 75% green space and is home to incredible natural beauty. All of the Town's actions are guided by the vision of the Inclusion Charter, which will help ensure that as growth comes, everyone is welcome within East Gwillimbury. This inclusive growth will help the Town grow and support all kinds of unique and exciting business opportunities.



**East Gwillimbury's
2023 Population
38,880**



Market Access

50km	Toronto
219km	Buffalo, NY
408km	Ottawa
863km	Chicago, IL

Demographics



23,991

38,880

44.4%

40

19%

66%

15%

Population 2016 Population 2023 Population Growth Median Age Aged 0-14 Aged 15-64 Aged 65+

Educational Attainment

For the population aged 25-64.



26%
Secondary

61%
Post-secondary

Top 6 Major Fields of Study



Household & Earnings



27% **Ontario 24%**

of East Gwillimbury's homeowners spend 30% or more of household total income on shelter costs.



Median Dwelling Value

\$1,173,140

Ontario Median
\$797,175

Median Employment Income

\$47,065

Ontario Median
\$42,539

81%

Single detached house

5%
Apartment / detached duplex

4%
Semi-detached house

0%
Rowhouse



Labour Force



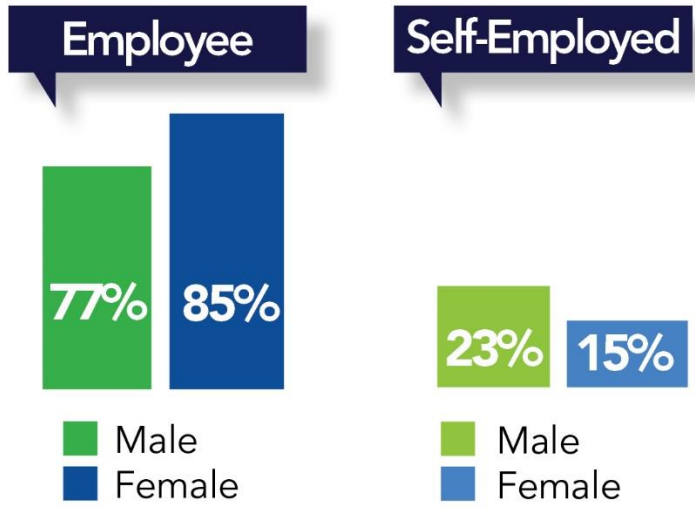
Top 5 Sectors by Industry*



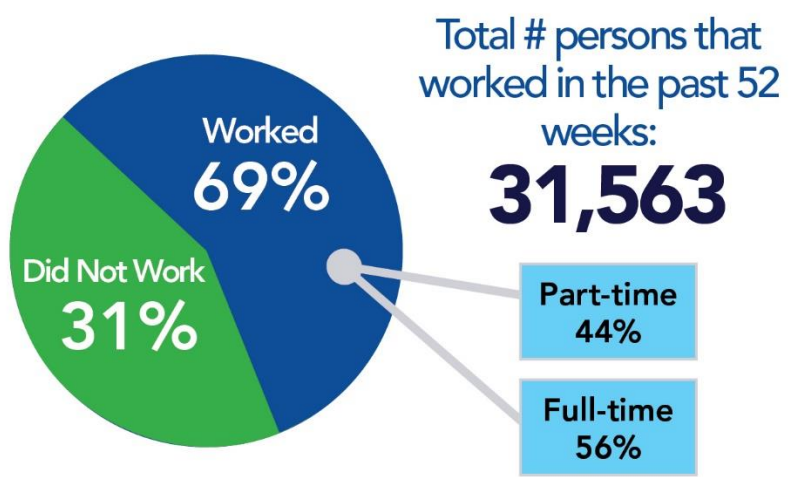
Top 5 Sectors by Occupation*



Labour Force by Class of Worker



Full-time or Part-time weeks worked



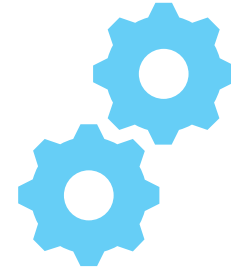
* By labour force employment.

All data sourced from Manifold SuperDemographics 2023, unless otherwise specified.

Data Sources

Please note that every effort has been made to use the most current data available. The major sources of information for this document are:

- The 2006, 2011, 2016 and 2021 Census from Statistics Canada.
- Manifold SuperDemographics data is from 2023 Manifold Data Mining Inc.



The most recent Census was conducted in May 2021. SuperDemographics 2023 is the most up to date estimation of population characteristics, based on mathematical models that draw from various data sources.

Manifold Projection Method:

Manifold estimates demographic data annually, including population projections for 5 and 10 years in the future. Manifold data sources include Statistics Canada, Health Canada, real estate boards/companies, Canadian Bankers Association, Bank of Canada, Canada Post Corporation, consumer and business directories books, flyer distribution association, regional health ministries, Citizenship and Immigration Canada, regional school boards, proprietary survey and research, and publications of hospitals, CM HC, BBM and partners.



1. Introduction

The Town of East Gwillimbury offers easy access to Toronto and the surrounding area, while remaining rural in nature and offering a standard of living that is second to none. The Town is growing rapidly, providing incredible new opportunities to residents and businesses in the area. While currently home to just over 30,000 residents, it is projected to be approaching 130,000 residents by 2051, with local job totals approaching 45,000.

As the population grows, continuing to build upon the Town's strengths will be paramount. East Gwillimbury is home to approximately 75% green space and is home to incredible natural beauty. Additionally, as a small community, the Town is proud of its inclusive nature.

All of the Town's actions are guided by the vision of the Inclusion Charter, which will help ensure that as growth comes, everyone is welcome within East Gwillimbury. This inclusive growth will help the Town grow and support all kinds of unique and exciting business opportunities.

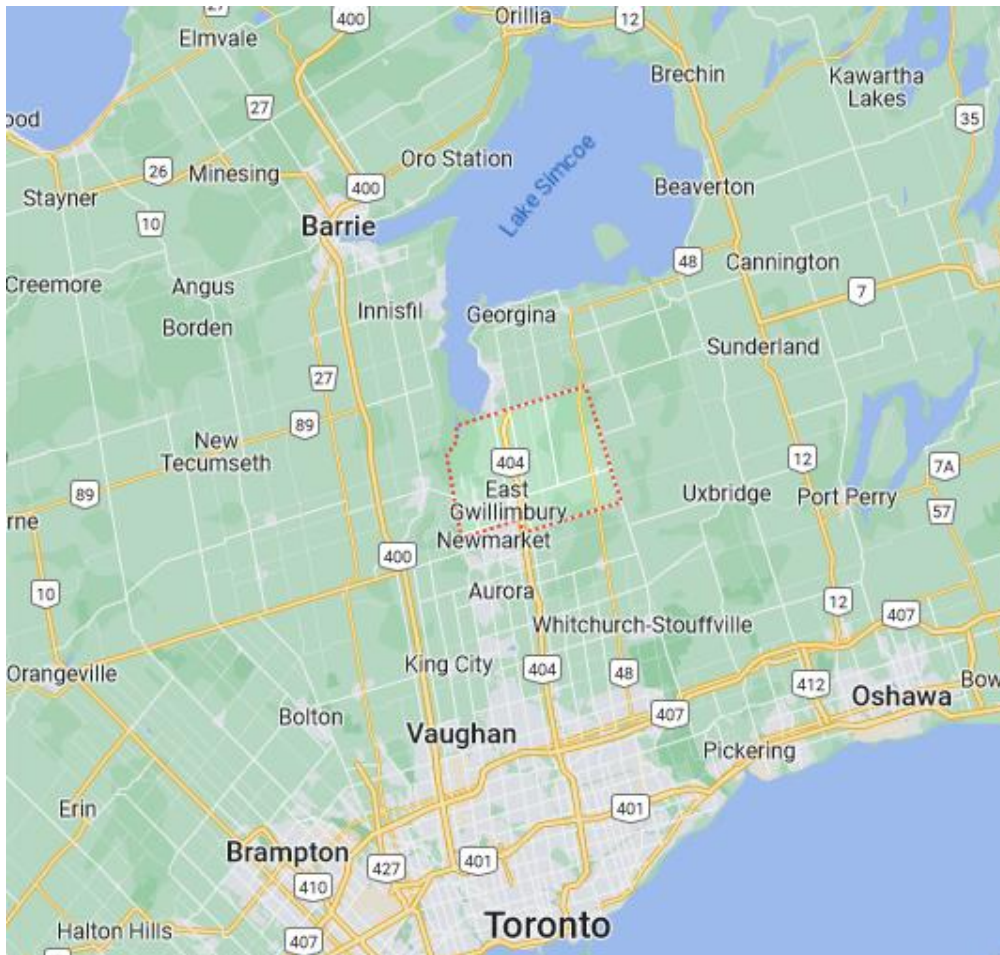


1.1. Location

East Gwillimbury is a booming Town located along the beautiful East Holland River. The Town is home to four main population centres, Holland Landing, Queensville, Sharon, and Mount Albert. While home to a growing population, it also houses incredible natural assets, with 75% of the Town comprising green space (i.e., farms, forests, etc.).

East Gwillimbury is ideally located on the northern outskirts of the GTA and in northern York Region. The Town is part of the “northern six” municipalities within the Region (Aurora, East Gwillimbury, Georgina, King, Newmarket, and Whitchurch-Stouffville). Figure 1 presents a Location Map of East Gwillimbury located between Lake Simcoe to the north and Toronto to the south, bisected by highway 404.

Figure 1: East Gwillimbury Location Map



Source: [Google Maps](https://www.google.com/maps), McSweeney and Associates, 2023.

1.2. Climate

East Gwillimbury derives climatic data from the Environment Canada staffed weather station at the King Smoke Tree Weather Station. Table 1 presents average temperature data on a monthly basis for East Gwillimbury, while Figure 2 presents average precipitation levels, again on a monthly basis.

Table 1: East Gwillimbury Average Temperature (°C), 1981-2010

1981-2010 Average Temperature												
Temperature	Jan	Feb	Mar	Apr	May	Jun	Jul	Aug	Sep	Oct	Nov	Dec
Daily Average	-7.4	-6.1	-1.5	6	12.5	17.7	20.5	19.6	15.3	8.6	2.2	-3.7
Daily Maximum	-3.6	-2.2	2.7	10.8	17.7	22.9	25.7	24.5	20	12.8	5.6	-0.4
Daily Minimum	-11.1	-10	-5.8	1.1	7.2	12.4	15.2	14.6	10.6	4.4	-1.2	-7
Extreme Maximum	13	14	24	30	32.2	34	35.5	36	34	27	21	19
Extreme Minimum	-34	-31	-30	-15	-3.5	2.5	5	3.5	-1.5	-7.2	-17	-31

Source: Environment Canada, [King Smoke Tree Station](#).

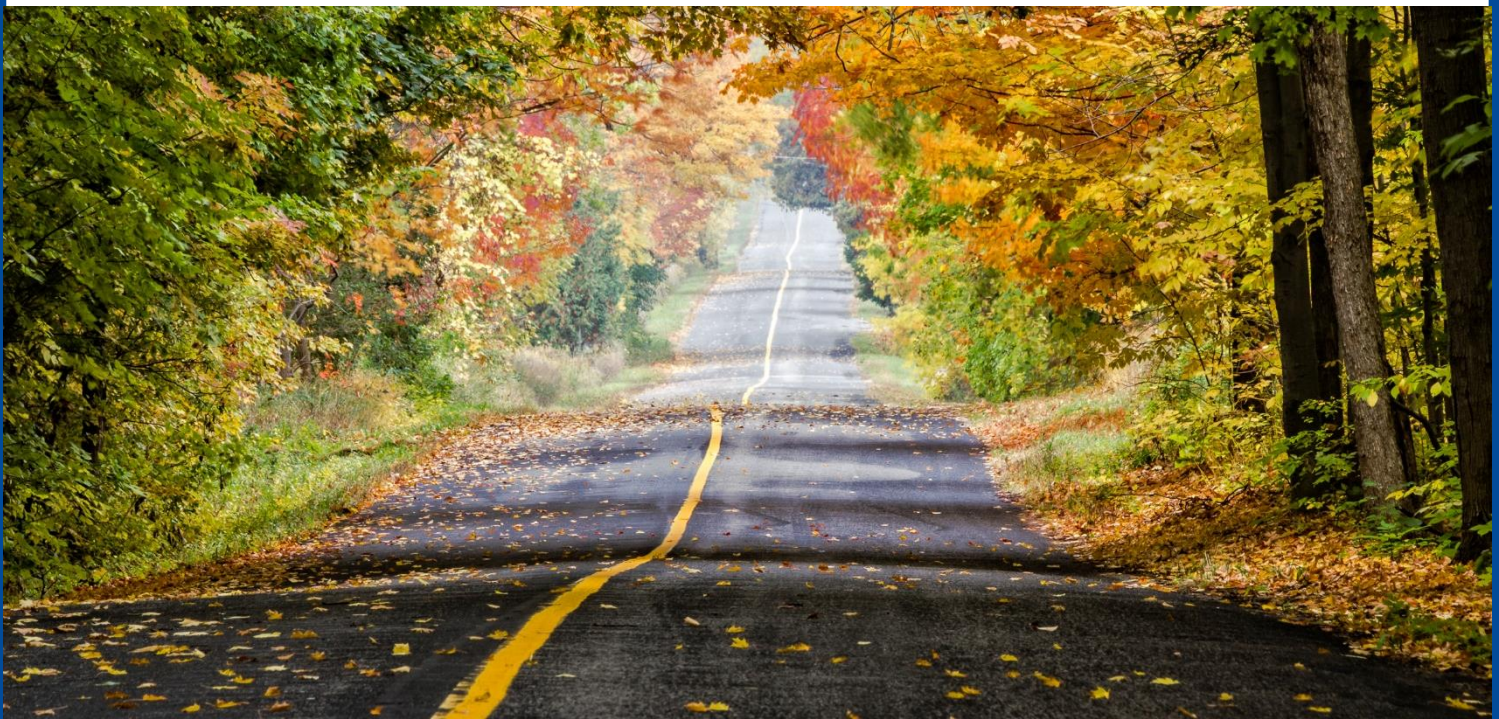
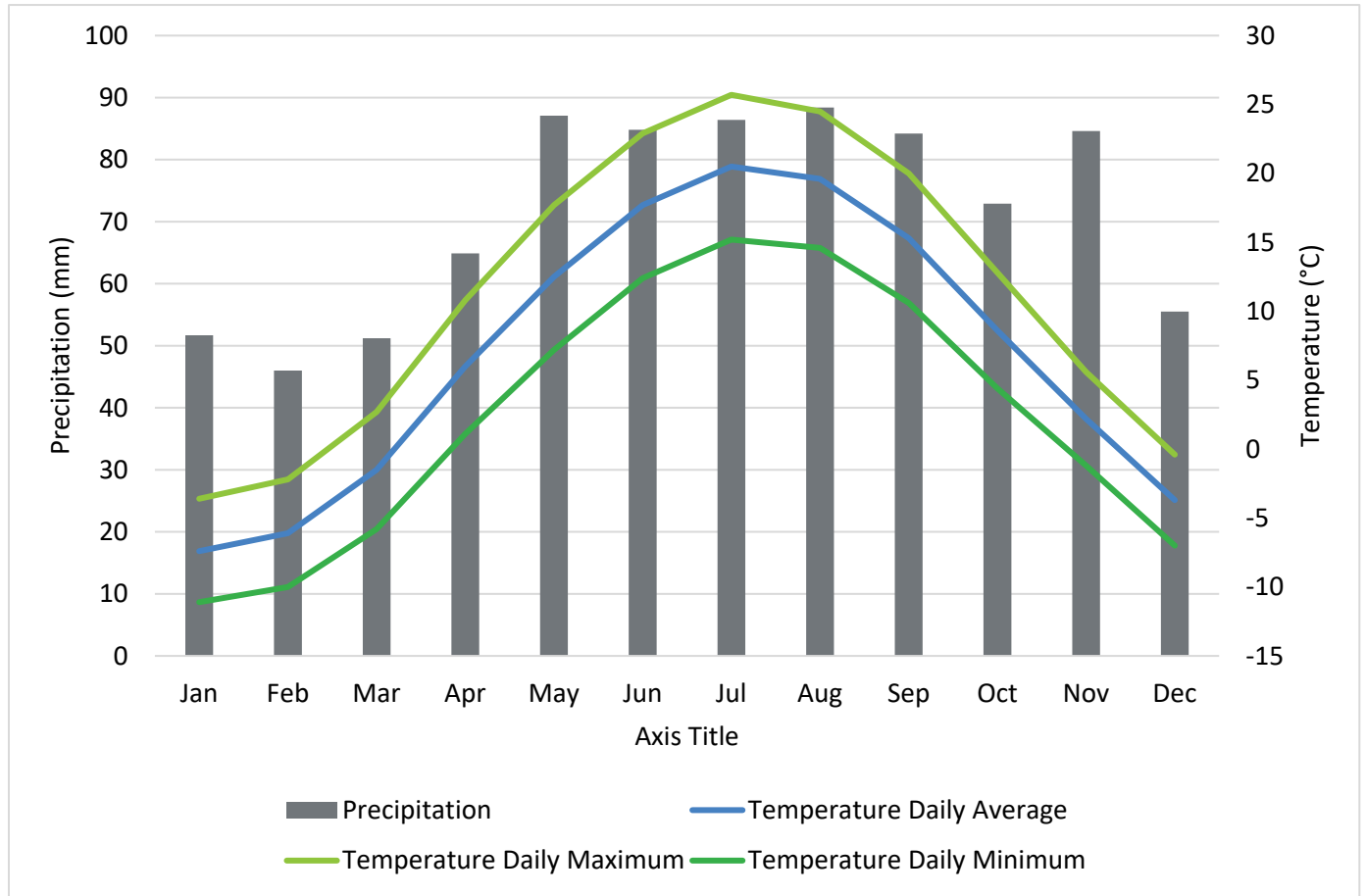


Figure 2: East Gwillimbury Average Precipitation, 1981-2010



Source: Environment Canada, [King Smoke Tree Station](#).



2. Demographics

2.1. Population Size and Growth

From 2006 to 2016 East Gwillimbury's population grew considerably at a rate of over 6.5% for each Census period, while Ontario's population grew by approximately 5% over each census period. However, from 2016 to 2021 East Gwillimbury's rapid growth sped up tremendously, growing at a rate of 44.37%. Through 2051, growth rates are not expected to slow, with East Gwillimbury's population projected to reach 128,600 by the mid-century mark. Table 2 presents the population figures along with the percentage change for both East Gwillimbury and the province of Ontario from 2011 to 2021, with East Gwillimbury's future population projections through 2051.

Table 2: Population Change, 2011 to 2051

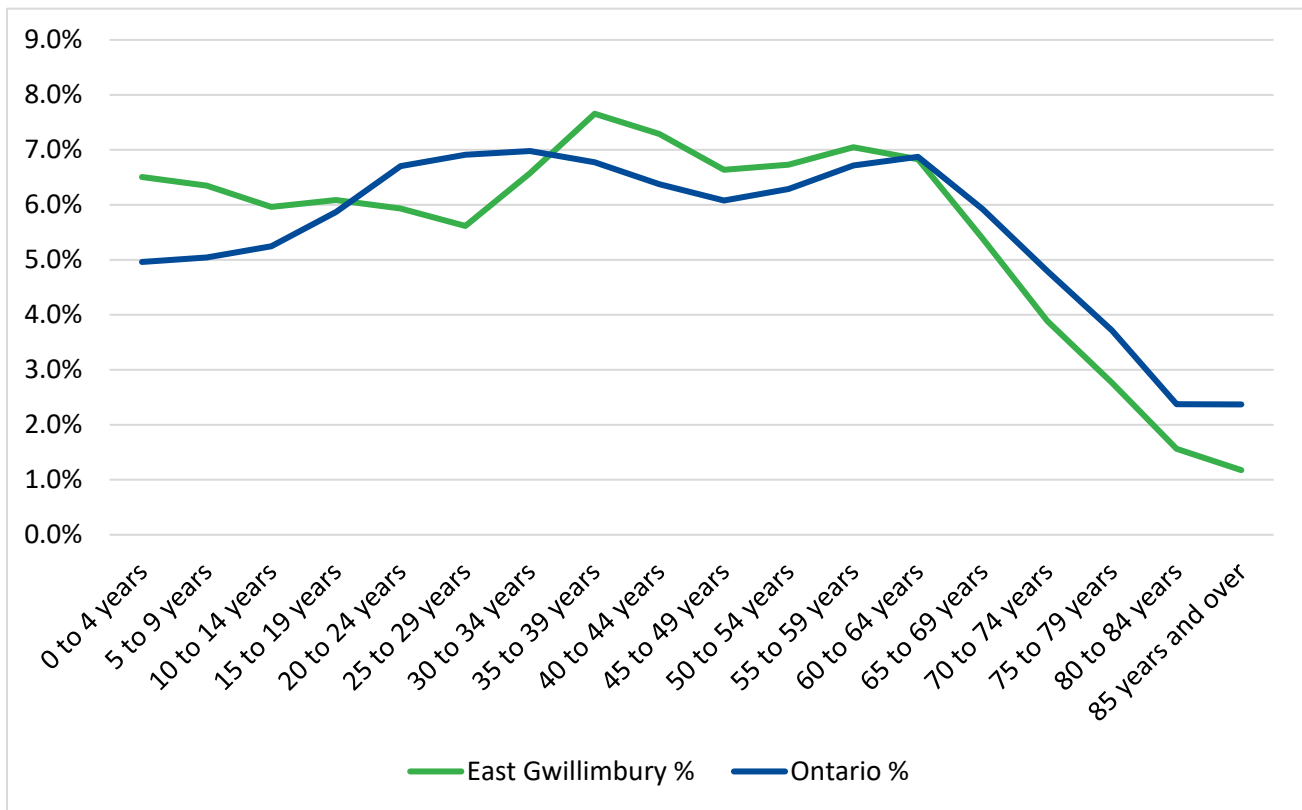
2011-2051 Population Change						
	2011	2016	2021	2031	2041	2051
East Gwillimbury	22,473	23,991	34,637	57,100	88,700	128,600
% Change	6.70%	6.75%	44.37%	64.85%	55.34%	44.98%
	2011	2016	2021	2031	2041	2051
Ontario	12,851,821	13,448,494	14,223,942	N/A	N/A	N/A
% Change	5.70%	4.64%	5.77%	---	---	---

Source: Statistics Canada 2006, 2011, 2016 and 2021 and York Region Official Plan (2031-2051).

2.2. Age Profile

In 2023, East Gwillimbury has a slightly younger population compared to the province. The average age is 39 compared to the provincial figure of 41. As shown in Figure 3, East Gwillimbury has a larger percentage of its population in the ages 0-19 and 34 to 64, with a comparably lower percentage of young adults (19 to 34) those ages 55 and older, compared to the province.

Figure 3: Age Distribution Chart, 2023



Source: Manifold Data Mining Inc. SuperDemographics 2023.

The average age in East Gwillimbury
is 39 compared to the provincial
figure of 41.

Table 3 presents age distribution percentages and totals for East Gwillimbury by five-year cohorts and compares them to Ontario percentage figures.

Table 3: Age Distribution, 2023

2023 Age Distribution			
Characteristics	East Gwillimbury	East Gwillimbury	Ontario
Total Population	38,880	100%	100%
0 to 4 years	2,530	6.5%	5.0%
5 to 9 years	2,469	6.4%	5.0%
10 to 14 years	2,318	6.0%	5.2%
15 to 19 years	2,367	6.1%	5.9%
20 to 24 years	2,307	5.9%	6.7%
25 to 29 years	2,184	5.6%	6.9%
30 to 34 years	2,557	6.6%	7.0%
35 to 39 years	2,977	7.7%	6.8%
40 to 44 years	2,834	7.3%	6.4%
45 to 49 years	2,581	6.6%	6.1%
50 to 54 years	2,617	6.7%	6.3%
55 to 59 years	2,740	7.0%	6.7%
60 to 64 years	2,655	6.8%	6.9%
65 to 69 years	2,094	5.4%	5.9%
70 to 74 years	1,512	3.9%	4.8%
75 to 79 years	1,075	2.8%	3.7%
80 to 84 years	608	1.6%	2.4%
85 years and over	457	1.2%	2.4%

Source: McSweeney and Associates from Manifold Data Mining Inc. SuperDemographics 2023.

2.3. Language Characteristics

Table 4 indicates knowledge of Canada’s official languages. Almost all residents within East Gwillimbury speak either English or French (or both) (97.0%), while 2.4% of residents across the province speak neither English nor French.

Table 4: Language Characteristics, 2023

2023 Language Characteristics			
Characteristics	East Gwillimbury	East Gwillimbury	Ontario
Total population	38,880	100%	100%
English	37,117	95.5%	93.5%
French	363	0.9%	3.4%
English and French	227	0.6%	0.7%
Neither English nor French	1,173	3.0%	2.4%

Source: McSweeney and Associates from Manifold Data Mining Inc. SuperDemographics 2023.

95.5% of East Gwillimbury residents speak English as their dominant language.

2.4. Mobility Characteristics

Residents in East Gwillimbury have similar mobility rates to the province. Estimates presented in Table 5 indicate that those moving to East Gwillimbury from outside the Town are most likely to be moving from another community within Ontario. (intra-provincial migrants, representing 3,398 of 3,421 migrants from 2022 to 2023, and 15,410 of 15,773 migrants from five years previous).

Table 5: East Gwillimbury Mobility Rates, 2023¹

2023 East Gwillimbury Mobility Rates			
Characteristics	East Gwillimbury	East Gwillimbury	Ontario
Mobility status – place of residence one year ago			
Total population	38,354	100%	100%
Non-movers	33,406	87.1%	88.3%
Movers	4,948	12.9%	11.7%
Non-migrants	1,351	3.5%	6.7%
Migrants	3,596	9.4%	5.0%
Internal Migrants	3,421	8.9%	4.2%
Intra-provincial migrants	3,398	8.9%	3.9%
Interprovincial migrants	24	0.1%	0.3%

¹ Mobility status refers to the relationship between a person's usual place of residence now and either one or five years ago. **Non-movers** are persons who were living at the same address and **Movers** are persons who were living at a different address. **Non-migrants** are movers who, on Census Day, were living at a different address, but in the same census subdivision (CSD). **Migrants** are movers who were residing in a different CSD (internal migrants) or who were living outside Canada (external migrants).

2023 East Gwillimbury Mobility Rates			
Characteristics	East Gwillimbury	East Gwillimbury	Ontario
Migrants from outside Canada	175	0.5%	0.8%
Mobility status – place of residence status five years ago			
Total population	36,308	100%	100%
Non-movers	17,806	49.0%	62.3%
Movers	18,502	51.0%	37.7%
Non-migrants	1,724	4.7%	15.7%
Migrants	16,779	46.2%	22.0%
Internal Migrants	15,773	43.4%	16.4%
Intra-provincial migrants	15,410	42.4%	14.8%
Interprovincial migrants	363	1.0%	1.6%
Migrants from outside Canada	1,006	2.8%	5.6%

Source: Manifold Data Mining Inc. SuperDemographics 2023.

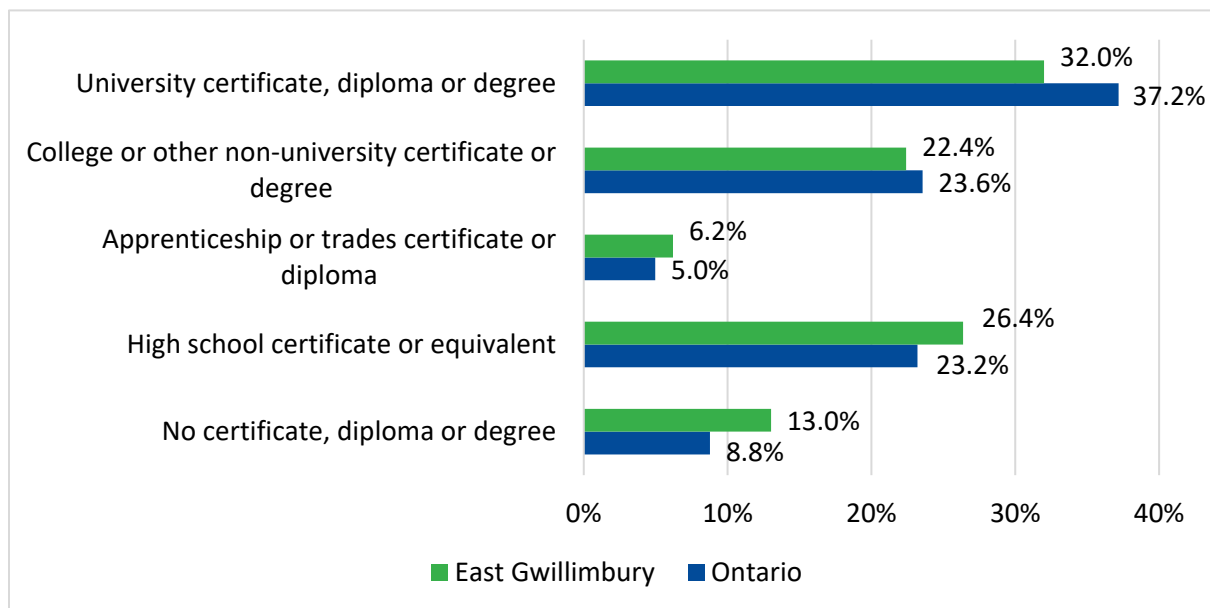


2.5. Level of Education

Figure 4 indicates the level of educational attainment in East Gwillimbury in 2023:

- Approximately three-out-of-five (60.6%) East Gwillimbury residents have reached post-secondary education.
- The percentage of persons with an apprenticeship or trades certificate or diploma is slightly higher than the province (6.2% vs. 5.0% in Ontario).
- Nearly one in four (22.4%) residents have attained college level education, while 32.0% have completed university level education.

Figure 4: Educational Attainment for Age Group 25-64, 2023



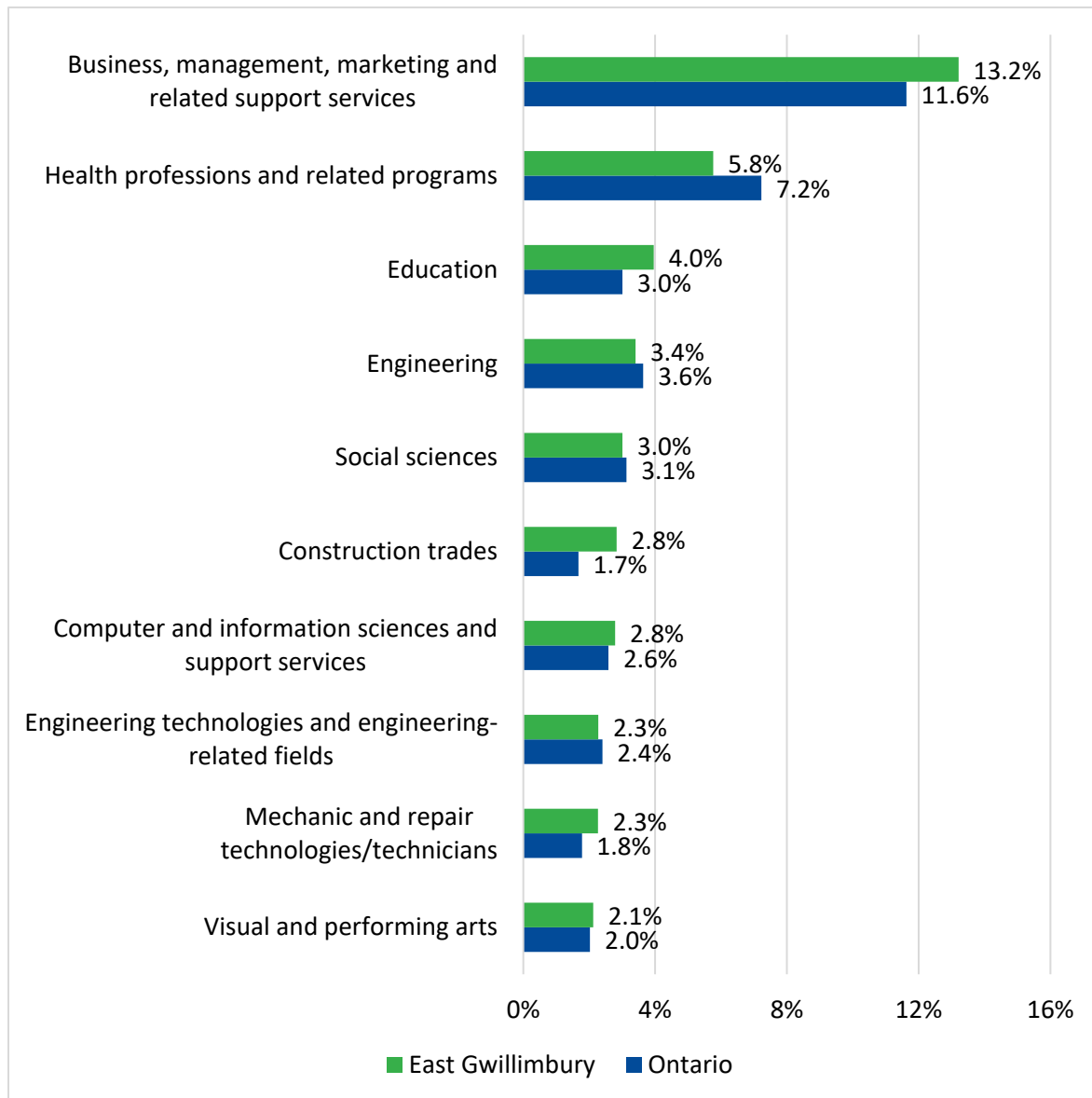
Source: Manifold Data Mining Inc. SuperDemographics 2023.

60.6% of East Gwillimbury residents between 25 and 64 have post-secondary education.

2.6. Major Fields of Study

Figure 5 and Table 6 illustrate the most common skills/knowledge types attained by residents in East Gwillimbury, as measured by the major fields of study of residents ages 15 and older who have completed a postsecondary education.

Figure 5: Major Fields of Study of Residents Ages 15 and Older, 2023



Source: McSweeney and Associates from Manifold Data Mining Inc. 2023.

When breaking down major field of study for residents in East Gwillimbury by sex it becomes clear that there are significant differences in fields of study undertaken. Notably, males over 15 in East Gwillimbury are much more likely to have studied **architecture, engineering and related technologies**, while females were much more likely to have pursued educational training in **health and related fields, business, management and public administration, or social and behavioural sciences and law**.

Table 6: Major Fields of Study, East Gwillimbury, 2023

Major Fields of Study, 2023			
Field of Study	Total %	Male %	Female %
No postsecondary certificate, diploma or degree	40%	41%	39%
Business, management and public administration	14%	12%	16%
Architecture, engineering, and related technologies	12%	22%	2%
Social and behavioural sciences and law	8%	4%	12%
Health and related fields	7%	3%	11%
Education	4%	1%	7%
Personal, protective and transportation services	4%	4%	4%
Mathematics, computer and information sciences	3%	5%	2%
Humanities	3%	2%	3%
Visual and performing arts, and communications technologies	2%	1%	3%
Physical and life sciences and technologies	2%	2%	2%
Agriculture, natural resources and conservation	1%	1%	1%
Other	0%	0%	0%

Source: McSweeney and Associates from Manifold Data Mining Inc. 2023.

2.7. Income

Table 7 shows the breakdown of total individual incomes for East Gwillimbury residents in 2022². In 2022, median total income for East Gwillimbury residents 15 years and over was \$47,065. Approximately 44.0% of residents earned over \$50,000 in 2022, and 18.9% of residents report income earned over \$90,000.

Table 7: Total Individual Income Levels, 2022

2022 Total Individual Income Levels			
Characteristic	Total	Male	Female
Total 15 years and over	31,563	15,646	15,917
Without total income	1,110	550	560
With total income	30,453	15,096	15,357
Under \$10,000 (including loss)	2,568	1,115	1,453
\$10,000 to \$19,999	3,461	1,512	1,949
\$20,000 to \$29,999	4,342	1,980	2,362
\$30,000 to \$39,999	3,345	1,414	1,930
\$40,000 to \$49,999	2,851	1,243	1,608
\$50,000 to \$59,999	2,468	1,155	1,313
\$60,000 to \$69,999	2,157	1,061	1,096
\$70,000 to \$79,999	1,817	948	869
\$80,000 to \$89,999	1,471	872	598
\$90,000 to \$99,999	1,261	732	530
\$100,000 and over	4,713	3,064	1,649
Characteristic	Total	Male	Female
Median total income \$	\$47,065	\$54,465	\$41,104
Average total income \$	\$63,937	\$73,743	\$54,577

Source: Manifold Data Mining Inc. SuperDemographics 2023 (2022 incomes).

² Please note that the 2023 Manifold data uses 2022 income data, as it is the most recent income information available.

Table 8 demonstrates, using 2022 income data, that the average and median incomes for households in East Gwillimbury were substantially higher in comparison to households in Ontario.

Table 8: Household Income Levels, 2022

2022 Household Income Levels			
Characteristic	East Gwillimbury	East Gwillimbury	Ontario
Total - Total household income groups for private households	12,641	100%	100%
Under \$5,000	67	0.5%	1.0%
\$5,000 to \$9,999	19	0.2%	0.5%
\$10,000 to \$14,999	63	0.5%	1.1%
\$15,000 to \$19,999	77	0.6%	1.7%
\$20,000 to \$24,999	173	1.4%	3.2%
\$25,000 to \$29,999	206	1.6%	3.0%
\$30,000 to \$34,999	201	1.6%	2.9%
\$35,000 to \$39,999	231	1.8%	3.2%
\$40,000 to \$44,999	233	1.8%	3.3%
\$45,000 to \$49,999	260	2.1%	3.4%
\$50,000 to \$59,999	562	4.4%	6.6%
\$60,000 to \$69,999	627	5.0%	6.7%
\$70,000 to \$79,999	718	5.7%	6.4%
\$80,000 to \$89,999	696	5.5%	6.1%

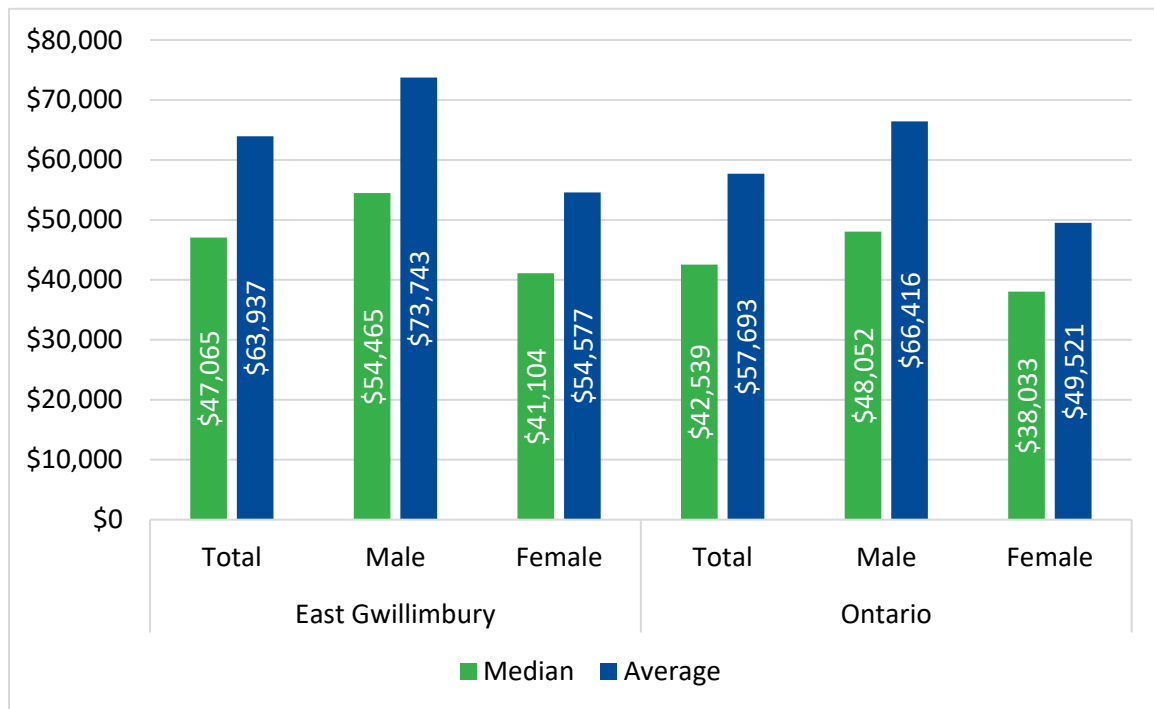
2022 Household Income Levels			
Characteristic	East Gwillimbury	East Gwillimbury	Ontario
\$90,000 to \$99,999	743	5.9%	5.9%
\$100,000 and over	7,765	61.4%	45.2%
Median household income \$	\$126,964		\$93,933
Average household income \$	\$149,431		\$118,798

Source: McSweeney and Associates from Manifold Data Mining Inc. SuperDemographics 2023 (2022 incomes).



Male-female income disparity was prevalent in 2022 in East Gwillimbury, with males earning average and median incomes higher than females. This disparity within East Gwillimbury is similar to provincial differences. Figure 6 presents employment income levels for males and females in East Gwillimbury and Ontario.

Figure 6: Household Income Levels, 2022



Source: McSweeney and Associates from Manifold Data Mining Inc. SuperDemographics 2023 (2022 incomes).

3. Labour Force

3.1. Key Indicators

East Gwillimbury is home to a labour force of over 22,000 persons.

While many residents commute out of the community for work (as the current job count figures are below 15,000), local opportunities are growing. York Region's Official Plan projects that by 2031 local employment totals (jobs, not residents working) will approach 16,500, reaching 27,500 by 2041 and 44,300 by 2051.



As illustrated in Table 9, East Gwillimbury's labour participation rate and employment rate are significantly higher than the Ontario figures, and the unemployment rate is slightly lower than in Ontario. These rates are all positive indicators, as they suggest that the local population is engaged in the workforce more than the provincial average (participation and employment rates) and that those who are looking for work are finding it at a better rate than their provincial counterparts (unemployment rate).

Table 9: Labour Force Characteristics, 2023

2023 Labour Force Characteristics		
Characteristic	East Gwillimbury	Ontario
Total population aged 15 years and older	31,563	13,118,324
In the labour force	22,481	8,515,177
Employed	21,431	8,055,458
Unemployed	1050	459,719
Not in the labour force	9,082	4,603,147
Participation rate %	71.22	64.91
Employment rate %	67.9	61.41
Unemployment rate %	4.7	5.4

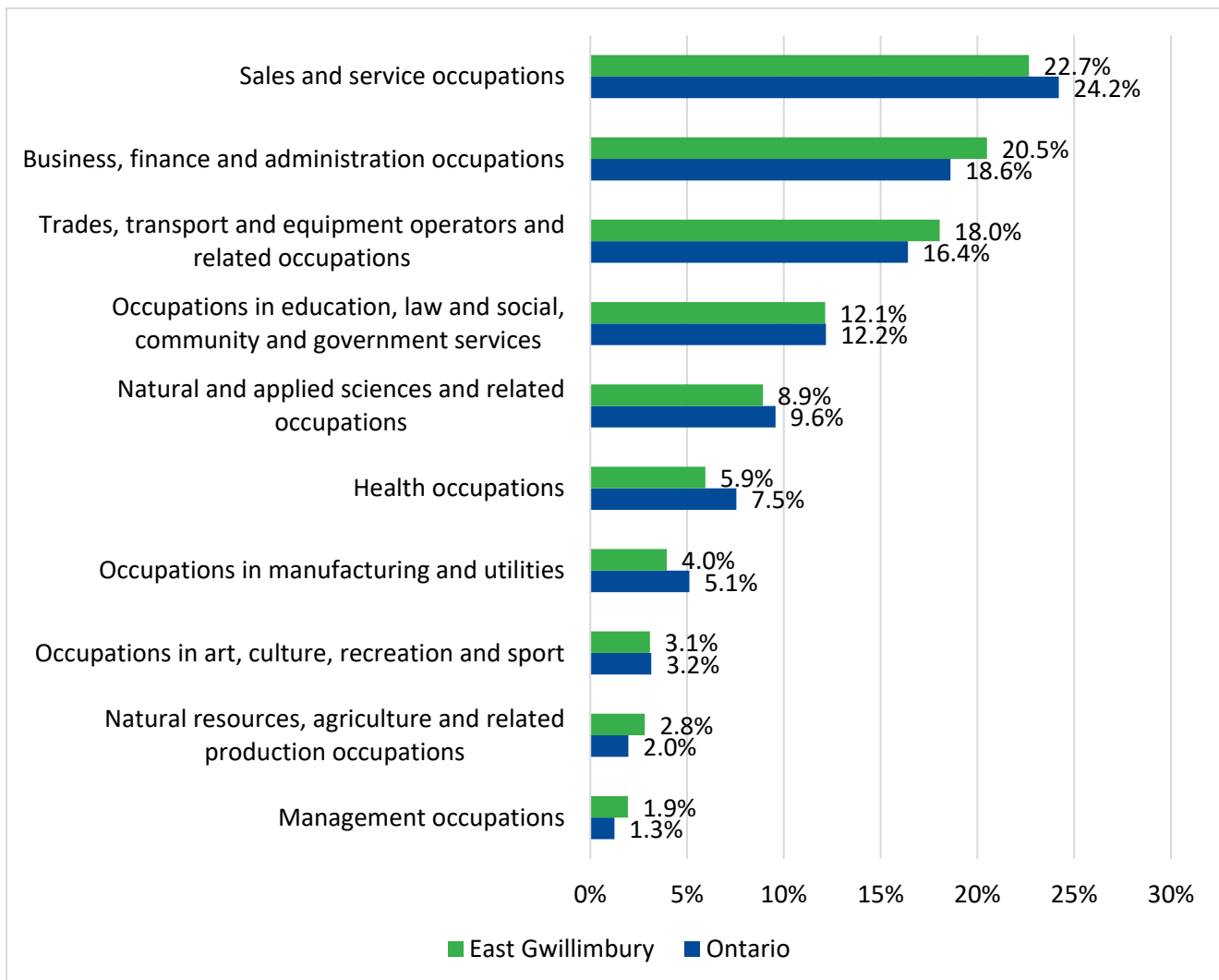
Source: Manifold Data Mining Inc. SuperDemographics 2023.

3.2. Labour Force by Occupation

Figure 7 and Table 10 illustrate East Gwillimbury’s labour force make up by occupation:

- The **Sales and Service** sector represents the largest occupational group (22.7%) in the community, though it is less concentrated than the provincial figure (24.2%).
- Across all occupation classifications, East Gwillimbury is fairly comparable to the provincial mark. No occupation class has a concentration that is more than 2% less or more than the provincial figure.

Figure 7: Labour Force by Occupation, 2023



Source: Manifold Data Mining Inc. SuperDemographics 2023.

Table 10: Labour Force by Occupation, 2023

2023 Labour Force by Occupation				
Characteristic	Male	Percentage of Occupation	Female	Percentage of Occupation
Total labour force 15 years and over by occupation	11,789	52%	10,691	48%
Occupation - Not applicable	187	43%	251	57%
All occupations	11,602	53%	10,440	47%
0 Management occupations	347	N/A	82	N/A
1 Business, finance and administration occupations	1355	30%	3162	70%
2 Natural and applied sciences and related occupations	1541	78%	425	22%
3 Health occupations	181	14%	1130	86%
4 Occupations in education, law and social, community and government services	870	33%	1805	67%
5 Occupations in art, culture, recreation and sport	208	31%	471	69%
6 Sales and service occupations	2294	46%	2701	54%
7 Trades, transport and equipment operators and related occupations	3,673	92%	306	8%
8 Natural resources, agriculture and related production occupations	533	86%	88	14%
9 Occupations in manufacturing and utilities	613	70%	260	30%

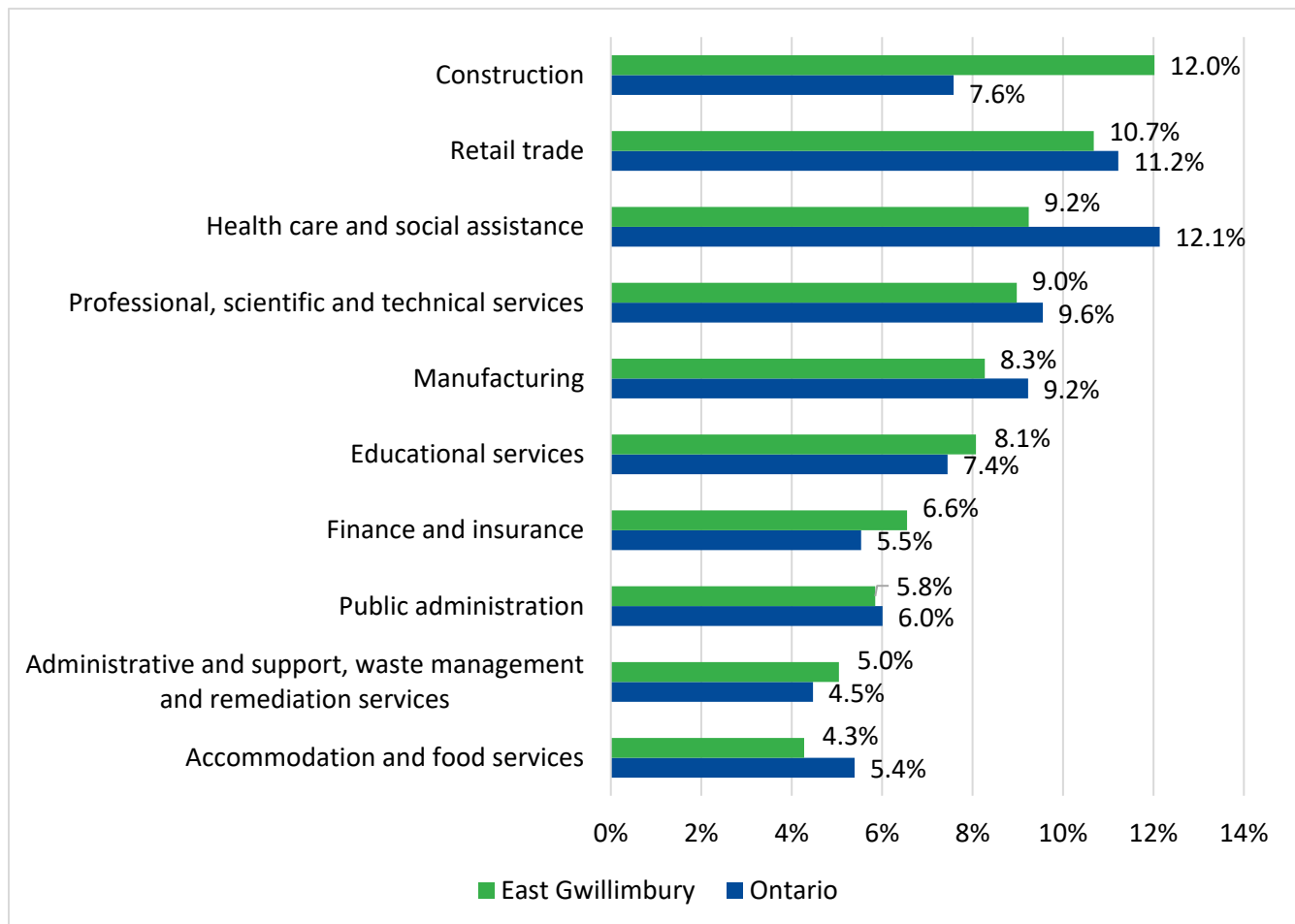
Source: Manifold Data Mining Inc. SuperDemographics 2023.

3.3. Labour Force by Industry

A similar breakdown for East Gwillimbury’s workforce can be applied to industries as was applied to occupations. To that end, Figure 8 and Table 11 illustrate East Gwillimbury’s labour force make up by industry of employment:

- The **Construction and Retail trade** industries each represent over ten percent of resident employment (12.0% and 10.7%, respectively).
- Once again, East Gwillimbury’s concentration figures are similar to the provincial figures, with the exception of **construction** where the figure is nearly twice Ontario’s. Given the population increase (and the required construction needs associated with that growth), this concentration is unsurprising.

Figure 8: Labour Force by Industry, 2023



Source: Manifold Data Mining Inc. SuperDemographics 2023.

Table 11: Labour Force by Industry, 2023

2023 Labour Force by Industry				
Characteristic	Male	Percentage of Industry	Female	Percentage of Industry
Total labour force 15 years and over	11,789	52%	10,691	48%
Industry - not applicable	187	43%	251	57%
All industries	11,602	53%	10,440	47%
11 Agriculture, forestry, fishing and hunting	242	75%	81	25%
21 Mining and oil and gas extraction	15	45%	18	55%
22 Utilities	186	83%	39	17%
23 Construction	2330	88%	321	12%
31-33 Manufacturing	1241	68%	582	32%
41 Wholesale trade	513	65%	279	35%
44-45 Retail trade	1052	45%	1302	55%
48-49 Transportation and warehousing	635	76%	202	24%
51 Information and cultural industries	248	54%	210	46%
52 Finance and insurance	605	42%	839	58%
53 Real estate and rental and leasing	358	53%	319	47%
54 Professional, scientific and technical services	1026	52%	953	48%
55 Management of companies and enterprises	49	49%	51	51%
56 Administrative and support, waste management and remediation services	758	68%	353	32%

2023 Labour Force by Industry

Characteristic	Male	Percentage of Industry	Female	Percentage of Industry
61 Educational services	483	27%	1297	73%
62 Health care and social assistance	249	12%	1788	88%
71 Arts, entertainment and recreation	198	55%	165	45%
72 Accommodation and food services	390	41%	552	59%
81 Other services (except public administration)	353	43%	471	57%
91 Public administration	660	51%	629	49%

Source: Manifold Data Mining Inc. SuperDemographics 2023.



3.4. General Wages by Occupation

Table 12 provides a sampling of local wage rates of the highest paying occupations (by average wage) for the closest and most representative region available (Toronto Region, Ontario).

Table 12: General Wages (Toronto Region, Ontario) by Occupation³

General Wages (Northeast Region, Ontario) by Occupation			
Category	Low Wage (\$/hour)	Average Wage (\$/hour)	High Wage (\$/hour)
Senior managers - financial, communications and other business services	\$33.65	\$64.90	\$97.44
Commissioned police officers	\$35.95	\$63.59	\$86.54
Government managers - health and social policy development and program administration	\$33.73	\$62.50	\$87.91
Other managers in public administration	\$43.59	\$62.34	\$77.44
Utilities managers	\$38.46	\$61.54	\$87.91
Engineering managers	\$43.08	\$60.10	\$88.72
Senior managers - trade, broadcasting and other services	\$26.35	\$60.00	\$128.54
Purchasing managers	\$35.00	\$58.97	\$75.00
Government managers - economic analysis, policy development and program administration	\$45.31	\$58.88	\$74.87
Financial managers	\$37.97	\$57.69	\$84.13
Insurance, real estate and financial brokerage managers	\$30.77	\$57.69	\$90.87

³ For more wage rates please visit [Canada Job Bank](https://www.ccb.ca/jobbank/).

General Wages (Northeast Region, Ontario) by Occupation

Category	Low Wage (\$/hour)	Average Wage (\$/hour)	High Wage (\$/hour)
Architecture and science managers	\$37.02	\$57.69	\$77.38
Senior managers - construction, transportation, production and utilities	\$16.55	\$57.03	\$190.41
Senior government managers and officials	\$20.00	\$57.00	\$84.62
University professors and lecturers	\$25.00	\$55.74	\$88.94
Computer and information systems managers	\$34.62	\$55.29	\$77.44
Allied primary health practitioners	\$24.04	\$54.95	\$63.19
Senior managers - health, education, social and community services and membership organizations	\$18.86	\$53.46	\$123.68
School principals and administrators of elementary and secondary education	\$38.46	\$53.37	\$62.50
Library, archive, museum and art gallery managers	\$31.01	\$53.33	\$62.09
Corporate sales managers	\$24.04	\$52.50	\$84.13
Mathematicians, statisticians and actuaries	\$34.34	\$50.77	\$78.37
Banking, credit and other investment managers	\$30.77	\$50.48	\$76.92
Software engineers and designers	\$31.25	\$50.00	\$72.12
Government managers - education policy development and program administration	\$31.01	\$49.98	\$65.26

Source: Produced by Human Resources and Skills Development Canada's Labour Market Information Service, Report generated on September 19, 2023.

Table 13 identifies some of the largest private employers by NAICS and employment level in East Gwillimbury.

Table 13: Largest Private Sector Employers

Largest Private Sector Employers		
Name	Industry	# of Employees (approximate)
Multimatic	31-33 – Manufacturing	450
Costco Wholesale	45 – Retail Trade	364
Geo A. Kelson	31-33 Manufacturing	318
Real Canadian Superstore	44 – Retail Trade	250
Skelton Canada	48 – Transportation and Warehousing	200
New Leaf	62 – Health Care and Social Assistance	200
Landmark Bus Lines	48 – Transportation and Warehousing	191
Rona+ Home Improvement	44 – Retail Trade	185
Longo’s	44 – Retail Trade	138

Source: York Region.



3.5. Labour Force Commute

Table 14 presents commuting data for those communities where at least 100 East Gwillimbury residents commute to for work. Table 15 provides the opposite information; data for those communities where at least 100 residents commute into East Gwillimbury for work.⁴ The tables provide information on persons reporting a “usual place of work other than in their home or outside of Canada”, and reveal the following regarding labour force commuting:

- The majority of the East Gwillimbury resident labour force (80%) works outside of the community.
- Over 1,000 residents of East Gwillimbury commute to either Newmarket or Toronto.
- Similar to commuter outflows, the majority of people working in East Gwillimbury travel from outside the Town for work (70%).

Table 14: Where the East Gwillimbury Resident Labour Force Works, 2021

2021 Resident Labour Force				
Place of Work	Total	Male	Female	
Newmarket	1,835	770	1,065	
East Gwillimbury	1,765	800	965	
Toronto	1,340	780	560	
Markham	690	400	290	
Vaughan	675	440	235	
Aurora	640	335	305	
Richmond Hill	475	210	275	
Whitchurch-Stouffville	355	225	135	
Georgina	190	70	120	
Bradford West Gwillimbury	190	110	85	
Mississauga	125	90	30	

⁴ Please note that Statistics Canada uses estimates and therefore, not all numbers will add up to nor will all percentages add to 100%.

2021 Resident Labour Force			
Place of Work	Total	Male	Female
Total workforce residing in East Gwillimbury	8,900	4,600	4,285
Total resident labour force with a usual place of work outside East Gwillimbury	7,135	3,800	3,320
Percent of residents declaring a place of work outside of East Gwillimbury	80%	83%	77%

Source: McSweeney and Associates, Statistic Canada, 2021 Commuting Flow.

Table 15: Place of Residence for Persons Working in East Gwillimbury, 2021

2021 Place of Residence			
Place of Residence	Total	Male	Female
East Gwillimbury	1,765	800	965
Newmarket	1,140	525	615
Georgina	775	430	345
Bradford West Gwillimbury	420	195	225
Aurora	230	125	105
Barrie	215	145	70
Toronto	205	135	65
Innisfil	175	110	65
Markham	110	75	35
Whitchurch-Stouffville	100	60	35
Total workforce in East Gwillimbury	5,890	3,050	2,755
Total non-resident workforce commuting to work to East Gwillimbury	4,125	2,250	1,790
Percent of workers (non-residents) commuting to work in East Gwillimbury	70%	74%	65%

Source: McSweeney and Associates, Statistic Canada, 2021 Commuting Flow.

4. Transportation and Shipping

4.1. Highways

East Gwillimbury is located between Lake Simcoe and the City of Toronto and bisected by both Highway 404 and Highway 48. With respect to major transportation corridors⁵:

- Highway 404, from Davis Drive through to the end of Highway 404 (approximately 14.5 km) sees average annual daily traffic of 35,775 vehicles.
- Highway 48, from Davis Drive through to Ravenshoe road (14.2 km) sees average annual daily traffic of 11,250 vehicles.
- Highway 400, through the west side of Bradford (6.1 km) sees average annual daily traffic of 106,600 vehicles.
- A proposed extension to connect Highway 400 to Highway 404, travelling through East Gwillimbury and Bradford, is currently in the planning stages. The proposed highway would extend from Highway 400 between 8th Line and 9th Line in Bradford West Gwillimbury, cross a small portion of King Township, and connect to Highway 404 between Queensville Sideroad and Holborn Road in East Gwillimbury.

Table 16: Traffic Counts for Key Roadways

Traffic Counts for Key Roadways		
Street	Segment	Average Weekly Volume
Centre St. (Mount Albert Population Centre)	North of Vivian Creek Park	2,711
Leslie St. (Queensville Population Centre)	Queensville Sideroad to Testa St	97,885
Yonge St. (Holland Landing Population Centre)	Mortonvale Drive to Walker Road	59,723
Green Lane East	West of 2nd Concession	314,351
Green Lane East	East Gwillimbury GO Station to Old Green Lane	269,842
Green Lane East	Harry Walker Parkway to Leslie St	269,378

⁵[Ontario Provincial Highways Traffic Volumes 2019.pdf](#)

Green Lane East	Exit 53, Hwy 404 to Harry Walker Parkway	268,508
Green Lane East	Exit 53, Hwy 404 to Woodbine Ave	220,287
Green Lane East.	Yonge/Green Lane Centre (Rona+ Plaza) to Yonge St	334,711
Woodbine Ave	Green Lane East to Mount Albert Rd	70,272
Yonge St.	Yonge/Green Lane Centre (Rona+ Plaza) to Highway 11	338,862

Table 17 presents the distance from East Gwillimbury to nearby or cosmopolitan urban centres while Table 18 presents the distance to the nearest US border crossings.

Table 17: Distance to Urban Centres

Distance to Urban Centres		
Location	Driving Time	Distance
Toronto	30 minutes	50 km
Barrie	1 hour	52 km
Kitchener/Waterloo	1 hour 30 minutes	141 km
St. Catharines	1 hour 45 minutes	171 km
Buffalo, NY	2 hours 20 minutes	219 km
London	2 hours 30 minutes	232 km
Kingston	3 hours	287 km
North Bay	3 hours 30 minutes	309 km
Ottawa	4 hours 30 minutes	408 km
Windsor	3 hours 55 minutes	408 km
Montreal	5 hours 30 minutes	565 km
Sault Ste. Marie	6 hours 30 minutes	650 km

Source: McSweeney and Associates from Google Maps.

Table 18: Distance to Major US Border Crossings

Distance to Border Crossings		
Border Crossing	Driving Time	Distance
Lewiston/Queenston	2 hours 20 minutes	189 km
Niagara Falls/Niagara Falls	1 hour 55 minutes	190 km
Buffalo/Fort Erie	2 hours 5 minutes	213 km
Port Huron/Sarnia	3 hours 10 minutes	331 km
Alexandria Bay/Ivy Lea	3 hours 20 minutes	333 km
Ogdensburg/Prescott	4 hours	393 km
Detroit/Windsor	4 hours	410 km
Massena/Cornwall	4 hours 30 minutes	462 km

Source: McSweeney and Associates from Google Maps.

4.2. Rail and Bus Services

East Gwillimbury is serviced by nearby freight and passenger rail access, through Go Transit, CN Rail, and Canadian Pacific. Bus service throughout East Gwillimbury is provided by York Region Transit and GO Transit.

Bus Services: York Region Transit

York Region Transit operates 65 full-time, rush hour and limited routes as well as six Viva bus rapid transit routes. Its north division is responsible for the routes within Aurora, East Gwillimbury, Georgina, King Township, and Newmarket. Within East Gwillimbury, York Region Transit operates numerous bus routes connecting residents and visitors to various locations around the Town as well as the East Gwillimbury Go Transit station.

For more information on York Region Transit and its services/routes, visit the [York Region Transit website](#).

GO Transit

Go Transit is a division of Metrolinx and the regional public transit service for the Greater Toronto Area. It is a network of train and bus lines that keep people moving around the GTHA, carrying over 70 million passers per year.

East Gwillimbury GO Station is a train station in the GO Transit network located on the south side of Green Lane East in East Gwillimbury, and is a stop on the Barrie line train service. The station is also a GO bus station, providing bus service for the area.

Rail services on the GO network can be accessed at the [GO Transit website](#).

Head Office:

20 Bay Street, Suite 6000
Toronto, ON
M5J 2W3
gotransit.com/en/

Closest Passenger Terminal:

East Gwillimbury GO Station
845 Green Ln E
East Gwillimbury, ON
L9N 0L8
Station Code: GO Transit: EA

CN Rail

CN is a leader in the North American rail industry. Following its acquisition of Illinois Central in 1999, WC in 2001 and GLT in 2004, as well as its partnership agreement with BC Rail in 2004, CN provides shippers with more options and greater reach in the rapidly expanding market for north-south trade.

Head Office:

935 de La Gauchetière Street West
Montreal, Quebec
H3B 2M9
P: 1.888.888.5909
cn.ca/en/index.htm

Closest Terminals:

Newmarket, ON
465 Davis Dr, L3Y 7T9
Port Code: GO Transit: NE

Canadian Pacific

CP has numerous routing options across Canada and through the U.S. as well as excellent North American reach through gateways with all Class I railways. CP has extensive Canadian and U.S. short line partners and serves leading Atlantic and Pacific port facilities.

Head Office:

Gulf Canada Square
401 9 Avenue SW, Suite 500
Calgary, AB
T2P 4Z4
www.cpr.ca/

Closest Terminals:

Newmarket, ON
465 Davis Dr, L3Y 7T9
Port Code: GO Transit: NE

4.3. Airports

Table 19 presents local regional airports and larger international hubs.

Table 19: Regional Airports

Regional Airports		
Name	Location	Distance and Drive Time
Billy Bishop Airport	2 Eireann Quay Toronto, Ontario M5V 1A1	59 kilometres 40 minutes
Toronto Pearson International Airport	6301 Silver Dart Drive Mississauga, Ontario L5P 1B2	64 kilometres 38 minutes
Lake Simcoe Regional Airport	30 Airport Rd Oro Station, Ontario L0L 2E0	79 kilometres 52 minutes

Source: McSweeney and Associates.



4.4. Ports

Table 20 presents accessible ports from the Town of East Gwillimbury.

Table 20: Regional Ports

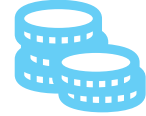
Regional Ports		
Name	Location	Distance and Drive Time
Port of Toronto (Ocean Port)	8 Unwin Ave Toronto, Ontario M5A 1A1	58 kilometres 42 minutes
Port of Oshawa	Farewell St Oshawa, Ontario L1H 8J7	87 kilometres 52 minutes
Hamilton Port Authority	605 James St N Hamilton, Ontario L8L 1K1	126 kilometres 1 hour 15 minutes

Source: McSweeney and Associates.



5. Taxes and Utilities

This section describes the taxes (local, provincial and federal), cost of water and sewer connection, waste management sites, and natural gas and electricity rates.



5.1. Local Property Tax Rates

Table 21 provides local property tax rates, effective as of 2023.

Table 21: Local Property Tax Rates, Effective 2023

2023 Local Property Tax Rates				
Property Class	East Gwillimbury	Region of York	School Boards	Total
RT - Residential	0.00319126	0.00348892	0.00153	0.00821018
MT - Multi Residential	0.00319126	0.00348892	0.00153	0.00821018
CT/ST/ZT - Commercial	0.00425108	0.00464759	0.0088	0.01769867
CU/SU/ZU - Commercial: Excess Land	0.00297575	0.00325331	0.0088	0.01502907
CX/XX/ZX - Commercial: Vacant Land	0.00297575	0.00325331	0.0088	0.01502907
XT - New Construction Commercial	0.00425108	0.00464759	0.0088	0.01769867
XU - New Construction	0.00297575	0.00325331	0.0088	0.01502907



2023 Local Property Tax Rates				
Property Class	East Gwillimbury	Region of York	School Boards	Total
Commercial: Excess Land				
IT/LT/JT - Industrial/Large Industrial/New Construction	0.00524388	0.00573299	0.0088	0.01977687
IU/LU/JU - Industrial: Excess Land	0.00340852	0.00372645	0.0088	0.01593497
IX - Industrial: Vacant Land	0.00340852	0.00372645	0.0088	0.01593497
IH - Industrial: Shared PIL	0.00524388	0.00573299	0.0088	0.01977687
IJ - Industrial: Vacant Land, Shared PIL	0.00340852	0.00372645	0.0088	0.01593497
PT - Pipeline	0.00293278	0.00320632	0.0088	0.0149391
FT - Farm	0.079781%	0.00087223	0.0003825	0.00205254
TT - Managed Forest	0.00079781	0.00087223	0.0003825	0.00205254

Source: Town of East Gwillimbury [website](#).

5.2. Federal and Provincial Income Tax Rates

Tables 22 and 23 provide federal and provincial corporate tax rates, while Table 24 provides income tax data and Table 25 presents sales tax rates. Please note that within Table 22, Ontario provides a manufacturing and processing tax credit that effectively reduces the corporate tax rate on the corporation's Canadian manufacturing and processing profits earned in the province to 10%.

Table 22: Combined Corporate Taxes – General Corporation (2022/2023)

Combined Corporate Taxes – General Corporation		
Corporate Tax Rates – Non-Canadian Controlled	2021	2022
Combined Federal and Provincial	%	%
General/Manufacturing and Processing/Investment	25.0	25.0
General; Active Business Income	26.5	26.5

Source: Revenue Canada.

Table 23: Corporate Taxes – Canadian Controlled (2022/2023)

Corporate Taxes – Canadian Controlled		
Corporate Tax Rates - Canadian Controlled	2022	2023
Combined Federal and Provincial	%	%
Small Business Income up to \$500,000	12.2	12.2
General; Active Business Income	26.5	26.5
Investment Income	50.2	50.2

Source: Revenue Canada.

Within Table 22, Marginal tax rate for dividends is a percentage of actual dividends received (not grossed-up taxable amount). Marginal tax rate for capital gains is a percentage of total capital gains (not taxable capital gains). Gross-up rate for eligible dividends is 38%, and for non-eligible dividends is 15%.

Table 24: Personal Income Tax, 2022-2023

Personal Income Tax, 2022-2023									
Canada 2023 Marginal Tax Rates					Canada 2022 Marginal Tax Rates				
Income	Earnings		Canadian Dividends		Income	Earnings		Canadian Dividends	
	Other Income	Capital Gains	Eligible	Non-Eligible		Other Income	Capital Gains	Eligible	Non-Eligible
2023 Taxable Income					2023 Taxable Income				
first \$53,359	15.00%	7.50%	-0.03%	6.87%	first \$50,197	15.00%	7.50%	-0.03%	6.87%
over \$53,359 up to \$106,717	20.50%	10.25%	7.56%	13.19%	over \$50,197 up to \$100,392	20.50%	10.25%	7.56%	13.19%
over \$106,717 up to \$165,430	26.00%	13.00%	15.15%	19.52%	over \$100,392 up to \$155,625	26.00%	13.00%	15.15%	19.52%
over \$165,430 up to \$235,675	29.32%	14.66%	19.73%	23.34%	over \$155,625 up to \$221,708	29.38%	14.69%	19.81%	23.41%
over \$235,675	33.00%	16.50%	24.81%	27.57%	over \$221,708	33.00%	16.50%	24.81%	27.57%

Personal Income Tax, 2022-2023

Basic Personal Amount

Level	2023 Amount	2023 Tax Rate
Federal	\$15,000	15%
Ontario	\$11,865	5.05%

Source: [Tax Tips](#).

Table 25: Sales Tax

Sales Tax Rates

Sales Tax	2022/2023
HST (harmonized sales tax)	13%

Source: [Tax Tips](#).



5.3. Water and Waste Management

Water & sewage/wastewater management is provided to residents by the Town. Rates are updated annually and available on [The Town of East Gwillimbury's website](#).

Waste management in East Gwillimbury is managed by York Region, with depots located in Elgin Mills, Georgina, Markham, McCleary Court, and Richmond Hill. Additionally, East Gwillimbury is home to one of the Region's Household Hazardous Waste and Recycling Depot.

Table 26: Waste Management Depots Accessible to East Gwillimbury Residents

York Region Waste Management Depots	
Name	Location
East Gwillimbury Household Hazardous Waste and Recycling Depot	225 Garfield Wright Boulevard East Gwillimbury, Ontario L0G 1V0
Elgin Mills Community Environmental Centre	1124 Elgin Mills Road East Richmond Hill, Ontario L4S 1M7
Georgina Transfer Station, Household Hazardous Waste and Recycling Depot	23068 Warden Avenue Georgina, Ontario L4P 3E9
Markham Household Hazardous Waste Depot	Rodick Road, south of Miller Avenue Markham, Ontario L6G 1B2
McCleary Court Community Environmental Centre	130 McCleary Court Vaughan, Ontario L4K 1W8
Richmond Hill Compost Facility	1351 Bloomington Road East Richmond Hill, Ontario L4K 2N7

Source: [York Region Waste Depots](#).

5.4. Electricity and Natural Gas

Electricity Service Provider: Hydro One

Hydro One Networks Inc.
P.O. Box 5700,
Markham, Ontario, L3R 1C8

P: 1.866.922.2466

E: LVM@hydroone.com

Rates are based on density of area. Depending on where in the Town residents live, their rates will vary between “urban, medium, or low density”. Residents can confirm which category they fall under by viewing page 2 of their bill.

For the most up to date rates by location and usage, please visit the [Hydro One website](#).

Natural Gas Service Provider: Enbridge Gas

Enbridge Gas
500 Consumers Road
North York, Ontario

P: 1.877.362.7434

E: ombudsman@enbridge.com

For [Residential bill estimates](#) and [Commercial Rates](#) based on location and usage are available at the Enbridge website.

5.5. Community Infrastructure

Table 27 presents available communications services for the Town of East Gwillimbury.

Table 27: Communications Services

Local Cable, Internet, and Phone Services	
Business	Phone
RuralWave	705.432.8468
Starlink	N/A - www.starlink.com/
FiberSpeed	1.866.342.3711
YorkNet Telecom Network	1.877.464.9675
Bell	1.866.210.7060
RogersShaw	1.866.210.4059
Vianet	1.800.788.0363
TekSavvy	1.877.779.1575
Galaxy Broadband	1.877.463.9278

Source: Town of East Gwillimbury.



6. Building and Development-Related Fees

6.1. Development Related Fees

The Town of East Gwillimbury charges user fees for a variety of services. Most services are covered through the collection of property taxes, however, in some cases we charge a direct user fee to those benefitting from the service.

Hard copies of fees and charges by-law can be obtained from the Clerks department, or are available online on the [Town's website](#).

For further information, please contact:

Planning and Development Services
Town of East Gwillimbury
Civic Centre
19000 Leslie St
Sharon, ON
LOG 1V0
P: 905.478.4282 x 1285



7. Business Support Programs and Services

7.1. National and Provincial Support

Table 28 provides information on organizations that provide support from various levels of government.

Table 28: National and Provincial Support Organizations

National and Provincial Support Organizations			
Organization	Contact	Address	Website
Service Canada	1.800.622.6232	18183 Yonge St East Gwillimbury, ON L9N 0H9	servicecanada.gc.ca
	General: 1.800.622.6232		
Service Ontario	Health Card: 1.888.376.5197 Driver and vehicle: 1.800.387.3445	18183 Yonge St East Gwillimbury, ON L9N 0H9	ontario.ca/serviceontario
Ontario Ministry of Economic Development, Job Creation and Trade	416.326.8475	College Park 777 Bay Street Toronto, ON M5G 2N4	ontario.ca/page/ministry-economic-development-job-creation-trade
Ontario Ministry of Labour, Immigration, Training and Skills Development	416.326.7160	400 University Avenue, Toronto, Ontario M7A 1T7	ontario.ca/page/ministry-labour-immigration-training-skills-development

Source: McSweeney and Associates and the Town of East Gwillimbury.

7.2. Local/Regional Support

Table 29 presents information for relevant local and regional support organizations.

Table 29: Local/Regional Support Organizations

Local/Regional Support Organizations			
Organization	Contact	Address	Website
Town of East Gwillimbury	905.478.4282	Civic Centre 19000 Leslie St Sharon, ON L0G 1V0	eastgwillimbury.ca
Central York Chamber of Commerce	905.478.8447	19040 Leslie St, Sharon, ON L0G 1V0	newmarketchamber.ca/
South Lake Community Futures CFDC	905.476.1244	183 The Queensway S, Keswick, ON L4P 2A3	Southlakefutures.ca
York Link (York Region Economic Development)	1.877.464.9675	17250 Yonge St, Newmarket, ON L3Y 6Z1	york.ca/business/assistance-businesses/york-link
YSpace Northern York Region	416.736.2100 ext. 44940		yorku.ca/yspace/

Local Incentive: Youth and Community Initiatives Fund (YCIF)

The Town of East Gwillimbury established the Youth and Community Initiatives Fund (YCIF) to provide financial assistance to youth, elite athletes as well as community groups and organizations wanting to provide community-based events. The program is fully funded through the Annual Mayor & Council Charity Golf Tournament held in September. For more information, please visit the [East Gwillimbury's website](#).

7.3. Education, Employment and Training

Table 30 presents information on post-secondary institutions near to the Town of East Gwillimbury.

Table 30: Post-Secondary Institutions Near to East Gwillimbury

Post-Secondary Institutions		
Name	Location	Contact
Georgian College of Applied Arts and Technology	One Georgian Dr. Barrie, ON L4M 3X9	georgiancollege.ca/about-georgian/campuses/barrie-campus/#contact
Seneca College of Applied Arts and Technology	1 York Gate Blvd, North York, ON M3N 3A1	senecacollege.ca/campuses/yorkgate
York University	4700 Keele St Toronto, ON M3J 1P3	yorku.ca/
	Markham Campus opening 2024	yorku.ca/markham/
University of Toronto	27 King's College Cir, Toronto, ON M5S 1A1	utoronto.ca/
Toronto Metropolitan	251 Jarvis St, Toronto, ON M5B 0C3	torontomu.ca/
Ontario College of Art & Design University	100 McCaul St, Toronto, ON M5T 1W1	ocadu.ca/
Université de l'Ontario français	9 Lower Jarvis St, Toronto, ON M5E 0C3	uontario.ca/

Source: McSweeney and Associates and Town of East Gwillimbury.

8. Quality of Life

8.1. Housing Characteristics

East Gwillimbury is a more expensive community compared to the rest of Ontario. That is, median dwelling values in East Gwillimbury are \$1.17 million compared to \$797,175 in Ontario and monthly costs for rented and owned dwellings are more expensive locally. However, while costs are higher, incomes are similarly higher locally, suggesting residents are able to afford these higher rates. To that end, a traditional measure of housing affordability is the percentage of the local population that spends more than 30% of their total household income on shelter costs. Within East Gwillimbury, that rate is 27%, compared to 24% of provincial households. As these numbers are quite similar, it suggests that the increased dwelling costs are offset by higher incomes and that due to this, the Town is similarly affordable for its residents compared to other parts of the province. This data is presented in Table 31.

Table 31: Dwelling Characteristics, 2023

2023 Dwelling Characteristics		
	East Gwillimbury	Ontario
Total number of private households	12,641	5,941,308
Average value of dwelling \$	\$1,303,798	\$934,642
Median value of dwellings (\$)	\$1,173,140	\$797,175
Median monthly shelter costs for owned dwellings	\$2,262	\$1,477
Average monthly shelter costs for owned dwellings	\$2,204	\$1,748
% Owned	84%	68%
% Rented	16%	32%
Median monthly shelter costs for rented dwellings	\$2,465	\$1,333
Average monthly shelter costs for rented dwellings	\$2,096	\$1,457
Percent of the population spending 30% or more of household total income on shelter costs	27%	24%

Source: McSweeney and Associates from Manifold Data Mining Inc. SuperDemographics 2023.

8.2. Health, Social and Community Services

Health and Social Services

Telehealth Ontario

P: 416.314.8721

health.gov.on.ca/english/public/program/Telehealth/Tele_faq.html

Free Access to a Registered Nurse (24 hours a day, 7 days a week): 1.866.797.0000

TTY: 1.866.797.0007

Telehealth Ontario is a free, confidential telephone service for health advice or general health information from a Registered Nurse. That means quick, easy access to a qualified health professional to help you decide whether to care for yourself, make an appointment with your doctor, go to a clinic, contact a community service or go to a hospital emergency room.



Emergency and Protective Services

Table 32 presents information on the names, locations, and contact details for regional emergency, health and protection services.

Table 32: Regional Emergency, Health and Protection Services

Regional Emergency, Health and Protection Services		
Name	Location	Contact
Southlake Regional Health Centre	596 Davis Dr, Newmarket, ON L3Y 2P9	905.895.4521
Mackenzie Richmond Hill Hospital	10 Trench St, Richmond Hill, ON L4C 4Z3	905.883.1212
Markham-Stouffville Hospital	381 Church St, Markham, ON L3P 7P3	905.472.7373
Cortellucci Vaughan Hospital	3200 Major MacKenzie Dr W, Vaughan, ON L6A 4Z3	905.417.2000
Holland Landing Fire Station	19314 Yonge Street, Holland Landing	905.478.4282
Mount Albert Fire Station	22 Princess Street, Mount Albert	905.478.4282
Queensville Fire Station	1590 Queensville Side Road, Queensville	905.478.4282
York Regional Police	47 Don Hillock Drive Aurora, ON L4G 0S7	Toll Free: 1.866.876.5423 (non-emergencies only) TTY 1.800.668.0398
York Region Paramedic Services	80 Bales Dr E, Sharon, ON L0G 1V0	Toll Free: 1.877.800.7924 (non-emergency)

Source: Town of East Gwillimbury.

8.3. Education

Table 33 presents information on East Gwillimbury Schools.

Table 33: East Gwillimbury Schools

East Gwillimbury Schools		
Elementary Schools		
School Name	Location	Phone
Phoebe Gilman Public School	145 Harvest Hills Blvd, East Gwillimbury, ON L9N 0C1	905.235.5136
Holland Landing Public School	16 Holland River Blvd, Holland Landing, ON L9N 1C4	905.836.6614
Sharon Public School	18532 Leslie St, Sharon, ON LOG 1V0	905.478.4952
Park Avenue Public School	36 Sunrise St, Holland Landing, ON L9N 1H5	905.836.5951
Queensville Public School	20317 Leslie St, Queensville, ON LOG 1R0	905.478.4191
Robert Munsch Public School	395 King St E, Mount Albert, ON LOG 1M0	905.473.0110
ÉÉC Jean-Béliveau	19300 2nd Concession Rd East Gwillimbury, ON L9N 0H3	289.383.6257
Good Shepherd Catholic ES	19112 2nd Concession Rd E East Gwillimbury, ON L9N 0H2	905.895.0303
Mount Albert PS	5488 Mt Albert Rd East Gwillimbury, ON LOG 1M0	905.473.2940

East Gwillimbury Schools

Our Lady of Good Counsel Catholic ES	801 Murrell Blvd East Gwillimbury, ON L9N 0P6	905.478.4242
--------------------------------------	---	--------------

Secondary Schools

School Name	Location	Phone
Dr John M Denison SS	135 Bristol Rd Newmarket, ON L3Y 8J7	905.836.0021
ÉS Norval-Morrisseau	51 Wright St Richmond Hill, ON L4C 4A2	905.508.2516
ÉSC Renaissance	700 Bloomington Rd Aurora, ON L4G 0E1	905.727.4631
Huron Heights SS	40 Huron Heights Dr Newmarket, ON L3Y 3J9	647.795.7540
Sacred Heart Catholic HS	908 Lemar Rd Newmarket, ON L3Y 1R9	905.895.3340

Source: Town of East Gwillimbury.

8.4. Recreation and Tourism

East Gwillimbury is home to a wealth of recreation and tourism opportunities, including an abundance of trails, community centres, sports fields/facilities and libraries. Links to trails are presented here, while Table 34 outlines additional recreation assets in the Town.

Trails

East Gwillimbury hosts over 30 km of trails, located across the Town. Trails for the following centres can be found here:

[Mount Albert](#)

[South Holland Landing](#)

[Queensville](#)

[Sharon](#)

[North Holland Landing](#)

Sports Fields

A list of EG's sports fields can be found [online](#). Soccer pitches, baseball diamonds, tennis and basketball courts can all be booked online or via the Recreation Office at 905.478.3826.

The Health and Active Living Plaza

[The Health and Active Living Plaza](#) will be a destination point in the community, offering recreational, health and arts and culture programs and community services through partnerships with local community groups.

This new facility, located in Queensville, will feature EG's first Aquatics Centre, a new library branch, a gymnasium, program spaces with a teaching kitchen, a nature themed playspace, and an interior boardwalk featuring local art.

[The new library branch](#) will feature public internet stations, free WiFi, and photocopying and scanning services. The library will also have dedicated spaces for storytimes and activities. Some new additions to the space are:

- A fully dedicated Makerspace.
- A sound recording studio and editing room.
- Bookable board rooms and meeting spaces.
- A Reading Garden.

For a full description and map of the site, as well as the plans for the extensive park space around the building, check out the [Town’s Site Plan and Map for the HALP](#).

The Town expects the building to be opened in 2025, provided the town has the required population of 40,000 residents to support this new building.

For additional activities and recreation opportunities in East Gwillimbury, please visit East Gwillimbury’s [website](#).

Table 34: Recreation Facilities

Recreation Facilities	
Name	Address
Community Centres/ Sports Facilities	
River Drive Park	20 Oak Ave, River Drive Park, ON L9N 1A1
Holland Landing Community Centre	19513 Yonge St, Holland Landing, ON L9N 1M4
East Gwillimbury Sports Complex (home to two arenas)	1914B Mt Albert Rd, Sharon, ON L0G 1V0
Mount Albert Community Centre	53 Main St, Mount Albert, ON L0G 1M0

Recreation Facilities

Name	Address
North Union Community Centre	2624 Boag Rd, Queensville, ON LOG 1R0
Ross Family Complex	19300 Centre Street, Mount Albert, ON LOG 1M0
Mount Albert Lions Community Centre	5057 Mt Albert Rd, Mount Albert, ON LOG 1M0
Harvest Hills Activity Centre	145 Harvest Hills Blvd, East Gwillimbury, ON L9N 0C1

East Gwillimbury Public Library Branches

Holland Landing Branch	19513 Yonge Street, Holland Landing, ON L9N 1P2
Mount Albert Branch	19300 Centre Street, Mount Albert, ON LOG 1M0

Source: Town of East Gwillimbury.

8.5. Events

Table 35 presents annual events that take place in East Gwillimbury. For a complete up-to-date listing, please [check the municipal website](#).

Table 35: Annual Events

Annual Events	
Name of Event	Date
Mayor and Council Pancake Breakfast	January
Family Fun Day	February
Easter Bunny Hike	April
Volunteer Appreciation	April
East Gwillimbury Farmers' Market	May to October
Music Nights in EG	Weekly, in July
Canada Day Festivities	July
Tapestry of Taste	August
Nature Day	September
Haunted Halloween Hike	October
Remembrance Day Service	November
Santa Claus Parade, Christmas Market and Tree Lighting	November
NYE in East Gwillimbury	December

Source: Town of East Gwillimbury.

8.6. Local Media

Table 36 presents information on newspapers relevant to East Gwillimbury, whether digital or paper.

Table 36: Newspapers

Local Newspapers	
Newspaper	Contact
East Gwillimbury Express	yorkregion.com/ontario-communities/east-gwillimbury/
East Gwillimbury’s Bulletin	thebulletinmagazine.com/
Neighbour Media	neighbourmedia.ca/

Source: Town of East Gwillimbury.



8.7. Local Institutions

Table 37 outlines financial institutions local to East Gwillimbury while Table 38 outlines real estate institutions.

Table 37: Financial Institutions in East Gwillimbury

Financial Institutions			
Office	Phone	Address	Website
TD	905.836.2690	18154 Yonge St East Gwillimbury L9N 0J3	td.com
CIBC	905.895.1105	18269 Yonge Street East Gwillimbury L9N 0J3	cibc.com
Scotiabank	905.853.4300	4-18289 Yonge Street East Gwillimbury L9N 0N2	scotiabank.com
Duca Credit Union	905.473.9373	19132 Centre Street Mount Albert LOG 1M0	Duca.com

Source: Town of East Gwillimbury.

Table 38: Real Estate Offices

Real Estate Offices			
Office	Phone	Address	Website
Toronto Regional Real Estate Board	416.443.8100	1400 Don Mills Road, Toronto, ON M3B 3N1	trreb.ca

Source: Town of East Gwillimbury.

Appendix A – Provincial and Federal Incentives

Provincial and Federal Programs

Table 39 presents available capital funding opportunities for local businesses alongside web links.

Table 39: Capital Funding

Capital Funding Program Opportunities	
Program	Website
Indigenous Economic Development Fund	ontario.ca/page/funding-indigenous-economic-development
AgriCompetitiveness Program	agriculture.canada.ca/en/agricultural-programs-and-services/agricompetitiveness-program
AgriScience Program - Projects	agriculture.canada.ca/en/agricultural-programs-and-services/agriscience-program-projects
Business Development Bank of Canada (BDC)	bdc.ca/en/home.htm
Canada Small Business Financing Program - Industry Canada	ic.gc.ca/eic/site/csbfp-pfpec.nsf/eng/Home
Dairy Processing Investment Fund	agriculture.canada.ca/en/agricultural-programs-and-services/dairy-processing-investment-fund
Futurpreneur Canada	futurpreneur.ca/
Futurpreneur Canada Newcomer Program	futurpreneur.ca/en/get-started/financing-and-mentoring/newcomer/
Nishnawbe Aski Development Fund	nadf.org/
Indigenous Community Capital Grants Program (ICCGP)	ontario.ca/page/funding-indigenous-economic-development#section-1
Indigenous Economic Development Fund	ontario.ca/page/funding-indigenous-economic-development
Infrastructure Ontario Natural Gas Grant Program	ontario.ca/page/natural-gas-expansion-program
Investment Ready: Certified Site Program	ontario.ca/page/get-investment-ready-certified-site-designation-your-industrial-property

Capital Funding Program Opportunities	
Program	Website
Productivity and Innovation Centre	picontario.ca/
Women Entrepreneurship Strategy	fednor.gc.ca/eic/site/fednor-fednor.nsf/eng/h_fn03907.html
Zero Emission Vehicle Infrastructure Program	nrcan.gc.ca/energy-efficiency/energy-efficiency-transportation-alternative-fuels/zero-emission-vehicle-infrastructure-program/21876

Table 40 presents available private and public sector funding opportunities related to commercialization alongside web links.

Table 40: Commercialization Funding

Commercial Funding Program Opportunities	
Program	Website
AC JumpStart	acceleratorcentre.com/programs/ac-jumpstart/
AgrilInnovate Program (AIP): Enabling Commercialization and Adoption Stream	agriculture.canada.ca/en/about-our-department/transparency-and-corporate-reporting/evaluation-agriinnovation-program-stream-c-enabling-commercialization-and-adoption
Canadian Technology Accelerators	tradecommissioner.gc.ca/cta-atc/index.aspx?lang=eng
CDMN Soft Landing Program	canadastechnetwork.ca/program/soft-landing
Going Global Innovation	tradecommissioner.gc.ca/funding-financement/ggi-vmi/index.aspx?lang=eng
Matching Investment Fund	https://www.cdc-ccl.ca/en/node/748
Next Generation Network Program	cengn.ca/next-generation-network-program/
Ontario Centres of Excellence Inc.	oc-innovation.ca/
Greenbelt Fund	greenbeltfund.ca/grants

Commercial Funding Program Opportunities	
Program	Website
Voucher for Innovation and Productivity	oc-innovation.ca/program-nav/voucher-for-innovation-and-productivity-vip/
IION Step Forward Entrepreneurs Program (SFEP)	iion.ca/sfep/
IRAPID PROGRAM	iion.ca/IRAPID/

Table 41 presents available funding opportunities related to economic development and community infrastructure projects alongside web links.

Table 41: EDO-Community Infrastructure

EDO-Community Funding Program Opportunities	
Program	Website
Brownfields Financial Tax Incentive Program - Ontario Ministry of Municipal Affairs and Housing	ontario.ca/page/brownfields-financial-tax-incentive-program
Infrastructure Ontario's Loan Program	infrastructureontario.ca/Infrastructure-Lending/
Indigenous Economic Development Fund	ontario.ca/page/funding-indigenous-economic-development
Eastern Ontario Development Fund - Ministry of Economic Development	ontario.ca/page/eastern-ontario-development-fund
Investment Ready: Certified Site Program	ontario.ca/page/get-investment-ready-certified-site-designation-your-industrial-property
Rural Economic Development (RED) Program	ontario.ca/page/rural-economic-development-program
Canada Foundation for Innovation	innovation.ca/en/OurFunds
Community Transportation Grant Program - Municipal Stream	https://news.ontario.ca/en/backgrounder/1000417/community-transportation-grant-program-recipients-and-services

EDO-Community Funding Program Opportunities	
Program	Website
Infrastructure Ontario Natural Gas Grant Program	ontario.ca/page/natural-gas-expansion-program

Table 42 presents available government funding opportunities related to clean-tech, energy and environment programs alongside web links.

Table 42: Clean-Tech, Energy and Environment

Clean-Tech, Energy and Environment Funding Program Opportunities	
Program	Website
Save on Energy	saveonenergy.ca/Business.aspx
Electric Vehicle Infrastructure Demonstration (EVID) Program	nrcan.gc.ca/climate-change/green-infrastructure-programs/electric-vehicle-infrastructure-demonstration-evid-program/20467
Fisheries and Aquaculture Clean Technology Adoption Program	dfo-mpo.gc.ca/aquaculture/business-entreprises/factap-application-patppa-eng.htm
Ontario Emerging Technologies Fund - Ontario Capital Growth Corporation	ocgc.gov.on.ca/
SD Tech Fund	sdtc.ca/en/
Clean Water and Wastewater Fund (CWWF)	infrastructure.gc.ca/plan/cwwf-fepeu-eng.html
Grid Innovation Fund - IESO	ieso.ca/get-involved/funding-programs/conservation-fund/cf-overview
Indigenous Forestry Initiative	nrcan.gc.ca/science-data/funding-partnerships/funding-opportunities/forest-sector-funding-programs/indigenous-forestry-initiative/13125
Zero Emission Vehicle Infrastructure Program	nrcan.gc.ca/energy-efficiency/transportation-alternative-fuels/zero-emission-vehicle-infrastructure-program/21876
Canada Student Work Placement ECO Program	eco.ca/employment-programs/student-placement/

Clean-Tech, Energy and Environment Funding Program Opportunities	
Program	Website
Cooperation Council of Ontario Social Enterprise Ontario	https://fnetb.com/service-directory/cooperation-council-of-ontario/
Empowering Futures Program	electricityhr.ca/workplace-solutions/youth-employment-funding/empowering-futures/
Energy Performance Program	saveonenergy.ca/For-Business-and-Industry/Programs-and-incentives/Energy-Performance-Program
Climate Action Incentive Fund	https://www.canada.ca/en/revenue-agency/services/child-family-benefits/cai-payment.html
SIF – Net Zero Accelerator	ic.gc.ca/eic/site/125.nsf/eng/00039.html

Table 43 presents available government programs and funding opportunities related to creative industries alongside web links.

Table 43: Creative Industries

Creative Industries Funding Program Opportunities	
Program	Website
Canadian Media Fund: Convergent Stream	cmf-fmc.ca/our-programs/
Canadian Media Fund: Experimental Stream	cmf-fmc.ca/our-programs/
FACTOR - Funding for the Music Industry	factor.ca/our-programs/our-programs-overview/
Film or Video Production Services Tax Credit (PSTC)	canada.ca/en/canadian-heritage/services/funding/cavco-tax-credits/film-video-production-services.html
IDM Fund: Global Market Development	ontariocreates.ca/our-sectors/interactive/interactive-digital-media-fund/idm-fund-global-market-development

Creative Industries Funding Program Opportunities

Program	Website
IDM Fund: Futures	ontariocreates.ca/our-sectors/interactive/interactive-digital-media-fund/ontario-creates-idm-fund-futures
IDM Fund: Discoverability and Commercialization	ontariocreates.ca/our-sectors/interactive/interactive-digital-media-fund/idm-fund-discoverability-and-commercialization
IDM Fund: Production and Concept Definition	ontariocreates.ca/our-sectors/interactive/interactive-digital-media-fund/idm-fund-production-and-concept-definition
Interactive Digital Media Fund (IDM)	ontariocreates.ca/investment-programs/content-creation/idm-fund
Ontario Book Publishing Tax Credit (OBPTC)	ontariocreates.ca/tax-incentives/obptc
Ontario Film and Television Tax Credit (OFTTC)	ontariocreates.ca/tax-incentives/ofttc
Ontario Computer Animation and Special effects Tax Credit	ontariocreates.ca/tax-incentives/ocase
Ontario Interactive Digital Media Tax Credit	ontariocreates.ca/tax-incentives/oidmtc
Ontario Production Services Tax Credit (OPSTC)	ontariocreates.ca/tax-incentives/opstc
Creative Export Canada	canada.ca/en/canadian-heritage/services/funding/creative-export-canada.html
Export Fund - Book	ontariocreates.ca/our-sectors/book/funding/export-fund
Film Fund - Ontario Creates	ontariocreates.ca/our-sectors/film-tv/film-fund
Accessible Digital Books	canada.ca/en/canadian-heritage/services/funding/book-fund/accessible-books-organizations.html
Council of Canada for the Arts Grants	canadacouncil.ca/funding/grants
Canada Cultural Spaces Fund (CCSF)	canada.ca/en/canadian-heritage/services/funding/cultural-spaces-fund/

Creative Industries Funding Program Opportunities	
Program	Website
Canada Periodical Fund	canada.ca/en/canadian-heritage/services/funding/periodical-fund/business-innovation.html
Canada Book Fund	canada.ca/en/canadian-heritage/services/funding/book-fund.html
Canada's Music Incubator Artist Entrepreneur	canadasmusicincubator.com/cmi-programs/artist-entrepreneur/
Telefilm Canada	telefilm.ca/en/financing/production
Rogers Documentary Fund	rogersgroupoffunds.com/fund-my-project/documentary-fund/

Table 44 presents available government programs and public/private-sector organizations related to exports alongside web links.

Table 44: Exports

Exports Program Opportunities	
Program	Website
Canadian Commercial Corporation (CCC)	ccc.ca/
Export Development Canada	edc.ca/
Investment Accelerator Fund (IAF)	marsiaf.com/
Business Innovation and Growth application toolkit	https://ised-isde.canada.ca/site/strategic-innovation-fund/en/project-requirements/business-innovation-and-growth
Mining Supply and Services Export Assistance Program	mndm.gov.on.ca/en/northern-development/trade-and-investment-support/mining-supply-and-services-export-assistance
CanExport - Innovation	tradecommissioner.gc.ca/tcs-sdc/funding-financement/canexport/innovation/index.aspx?lang=eng

Exports Program Opportunities	
Program	Website
CanExport - SMEs	tradecommissioner.gc.ca/funding-financement/canexport/sme-pme/index.aspx?lang=eng

Table 45 presents available government programs and public/private-sector organizations related to human resources alongside web links.

Table 45: Human Resources and Training

Human Resources and Training Program Opportunities	
Program	Website
Apprenticeship Employer Signing Bonus	https://www.ontario.ca/page/hire-apprentice-canada.ca/en/revenue-
Apprenticeship Job Creation Tax Credit - Canada Revenue Agency	agency/services/tax/individuals/topics/about-your-tax-return/tax-return/completing-a-tax-return/deductions-credits-expenses/line-41200-investment-tax-credit/apprenticeship-job-creation-tax-credit.html
Autonomous Vehicle Innovation Network - TalentEdge	avinhub.ca/talent-development/
Canada Ontario Job Grant	https://www.tcu.gov.on.ca/eng/eopg/cojg/
Canada Summer Jobs	canada.ca/en/employment-social-development/services/funding/canada-summer-jobs.html
Canadian Institutes of Health Research	cihr-irsc.gc.ca/e/37788.html
College and Institutes Canada Clean Tech Internship	www.careerlauncher.ca/employers/our-internship-programs/clean-tech/
Cooperative Education Tax Credit (CETC)	fin.gov.on.ca/en/credit/cetc/
Environmental Youth Corps Internship Program	eco.ca/wage-subsidy-programs/
IBM Innovation Incubator Project - TalentEdge	startupheretoronto.com/sectors/technology/the-ibm-innovation-incubator-project-i3/
Industrial Research Assistance Program (IRAP)	nrc-cnrc.gc.ca/eng/irap/
Mitacs Accelerate	mitacs.ca/accelerate

Human Resources and Training Program Opportunities	
Program	Website
MITACS Elevate	mitacs.ca/en/programs/elevate/program-details
Mitacs-Accelerate InDev	mitacs.ca/en/mitacs-accelerate-indev
NSERC Collaborative Research and Development Grants	nserc-crsng.gc.ca/Professors-Professeurs/RPP-PP/CRD-RDC_eng.asp
Ontario Labour Market Partnerships	https://www.tcu.gov.on.ca/eng/eopg/programs/lmp.html
Ontario Youth Apprenticeship Program (OYAP)	oyap.com/
Pre-Apprenticeship Training Program - Ontario Ministry of Training, Colleges and Universities	https://www.tcu.gov.on.ca/eng/eopg/programs/preapp.html
Skills Link Program	https://www.canada.ca/en/employment-social-development/services/funding/skills-link.html
Summer Company	ontario.ca/business-and-economy/summer-company-program-guidelines-2013
Youth Employment Fund	https://data.ontario.ca/dataset/youth-employment-fund-yef-employer-data
Opportunities Fund	biotalent.ca/programs/
Mushkegowuk Council Employment and Training Services	fnetb.com/service-directory/mushkegowuk-council-ontario-employment-services/
ENCQOR 5G TALENTEDGE INTERNSHIPS	https://www.oc-innovation.ca/programs/talentedge-internship-program-tip-ngnp/
Autonomous Vehicle Innovation Network (AVIN) TalentEdge Internships	ontariobusinessgrants.com/grants/oce-autonomous-vehicle-innovation-network-avin-talentedge-internships/
Apprenticeship Completion Grant	canada.ca/en/employment-social-development/services/funding/apprenticeship-completion-apply.html
Group Sponsorship Grant	ontariobusinessgrants.com/grants/ministry-of-labour-training-and-skills-development-group-sponsorship-grant-gsc-2021/

Human Resources and Training Program Opportunities	
Program	Website
Apprenticeship Incentive Grant for Women	canada.ca/en/employment-social-development/services/funding/apprenticeship-incentive-women-overview.html
Connect Canada Internships	connectcanadainternships.ca/program-overview/
Digital Service Squad Grant Program	digitalmainstreet.ca/ontariogrants/
Career Ready Program ITAC Wage Subsidy	technationcanada.ca/en/future-workforce-development/career-ready-program/
Career-Ready with CTMA! - Machine, Tool, Die, Mould and Automation Sector	ctma.com/career-ready

Table 46 presents available government programs and public/private-sector organizations related to innovation alongside web links.

Table 46: Innovation

Innovation Program Opportunities	
Program	Website
Indigenous business development	canada.ca/en/indigenous-services-canada.html
Application Toolkit: Strategic Innovation Fund - Steel and Aluminum	https://ised-isde.canada.ca/site/strategic-innovation-fund/en/investments/projects
Centre of Excellence in Next Generation Networks (CENGN)	nce-rce.gc.ca/NetworksCentres-CentresReseaux/CECR-CECR/CENGN_eng.asp
Connect to Innovate	ised-isde.canada.ca/site/connect-to-innovate/en
Creative Eport Canada	canada.ca/en/canadian-heritage/services/funding/creative-export-canada.html
ENCQOR 5G	https://www.oc-innovation.ca/programs/encqor-5g/
Genome Canada	genomecanada.ca/
Going Global Innovation	tradecommissioner.gc.ca/funding-financement/ggi-vmi/index.aspx?lang=eng

Innovation Program Opportunities	
Program	Website
IBM Innovation Incubator Project - Customer Demonstration Program	https://research.ibm.com/collaborate/open-source-incubator
Impact Canada Challenge Hub	impact.canada.ca/en
National Science and Engineering Council of Canada	nserc-crsng.gc.ca/Professors-Professeurs/Grants-Subs/Explore-Explorer_eng.asp
Next Generation Manufacturing Program	ngen.ca/
Ontario Business Research Institute Tax Credit	fin.gov.on.ca/en/credit/obritc/
Strategic Innovation Fund (SIF)	ic.gc.ca/eic/site/125.nsf/eng/home
Business Innovation and Growth application toolkit	https://ised-isde.canada.ca/site/strategic-innovation-fund/en/project-requirements/business-innovation-and-growth
Bioenterprise SmartGrowth Program	bioenterprise.ca/programs/smartgrowth-program/
Innovation for Defence and Security (IDEaS)	canada.ca/en/department-national-defence/programs/defence-ideas.html
Business Scale-up and Productivity - FedDev Ontario	feddevontario.gc.ca/eic/site/723.nsf/eng/02466.html?OpenDocument
Regional innovation ecosystems (RIE) Stream	feddevontario.gc.ca/eic/site/723.nsf/eng/02474.html?OpenDocument
Advancing Indigenous Gender Equity	grandchallenges.ca/2020/the-indigenous-innovation-initiative-launches-inaugural-program/
AI-Powered Supply Chains Supercluster (SCALE.AI)	scaleai.ca/projects/
Forest Sector Investment and Innovation Program (FSIIP)	ontario.ca/page/forestry-sector-investment-innovation-program
Innovative Solutions Canada	ic.gc.ca/eic/site/101.nsf/eng/home
Ontario Automotive Modernization Program Ontario.ca	ontario.ca/page/ontario-automotive-modernization-program

Innovation Program Opportunities

Program	Website
Southern Ontario Network for Advanced Manufacturing Innovation	sonamiontario.ca/
Voice Technology Accelerator Program	acceleratorcentre.com/programs/alexa-voice-tech-accelerator-program
Digital Main Street Digital Transformation Grant	digitalmainstreet.ca/ontariogrants/
Idea to Innovation Grants	nserc-crsng.gc.ca/Professors-Professeurs/RPP-PP/I2I-INNOV_eng.asp

